

See emailed PDF for updates

**VENTURA COUNTY LCP
CATEGORICAL EXCLUSIONS**

FOR: SINGLE-FAMILY RESIDENTIAL DWELLINGS

AREAS: See attached maps and Section 8192-2.2 of the coastal zoning ordinance.



Boundary of exclusion areas for the construction of single-family dwellings.



Statutory Non-excludable Areas (pursuant to section 30610.5(b) of the Coastal Act)

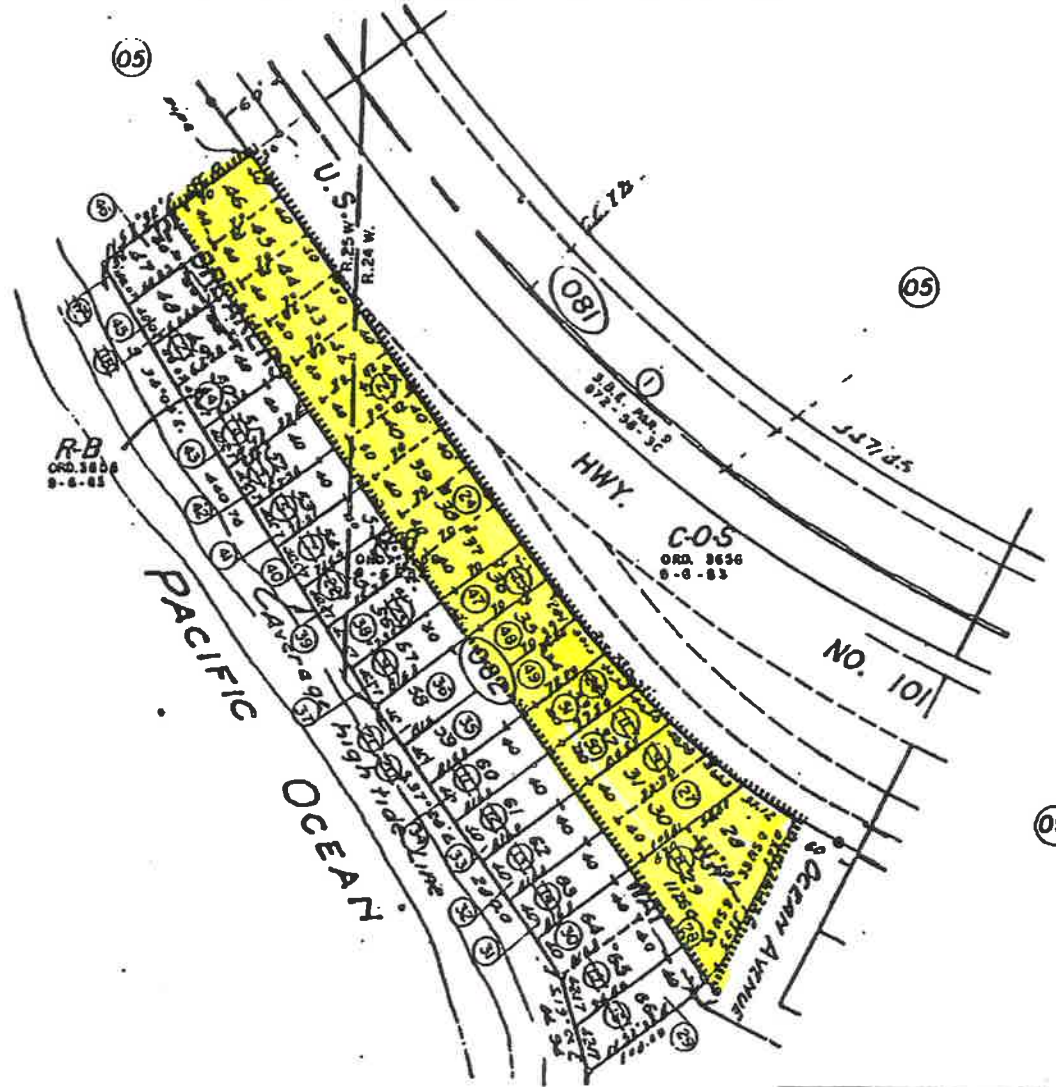
NOTE: Please refer to Attachment "1" of this Resolution and Section 8192-2 for a complete list of areas and developments which are non-excludable, and must obtain a permit as provided for in the LCP zoning ordinance. In general, no development within one hundred feet of the upland limit of any stream, marsh, wetland, estuary, or lake is excluded from the permit requirements of the LCP zoning ordinance regardless of whether such waters are depicted on the exclusion maps. Additionally, if any LCP policies or maps specify an area of concern for natural resources or environmentally sensitive habitats, no development within those areas is categorically excluded.

POR. SEC. 12, T. 3 N., R. 25 W. S.B.B. & M.
 POR. SEC. 7, T. 3 N., R. 24 W. S.B.B. & M.

Tax Rate Area
 91008

60-08

SEP 6 1983



Mussel Shoal Tr. 1, R.M. Bk. 12, Pg. 30

NOTE- Assessor's Block Numbers Shown in Ellipses
 Assessor's Parcel Numbers Shown in Circles
 Assessor's Mineral Numbers Shown in Squares

NOTE: ALL MAP PARCELS SHOWN ON THIS PAGE
 DO NOT MEET STATE & COUNTY LEGAL LOT
 CREITERIA. COUNTY CLERK'S OFFICE OR
 PLANNING DIVISION TO VERIFY

VENTURA COUNTY PLANNING DEPARTMENT	
ZONE BOUNDARY	ZONING MAP 60-08
BOARD OF SUPERVISORS COUNTY OF VENTURA	
ORDINANCE 8884	ADOPTED 8-6-83
COUNTY CLERK	Robert L. Haron
By <i>Jay Hillard</i>	Deputy

Assessor's Map Bk. 60, Pg. 08
 County of Ventura, Calif.

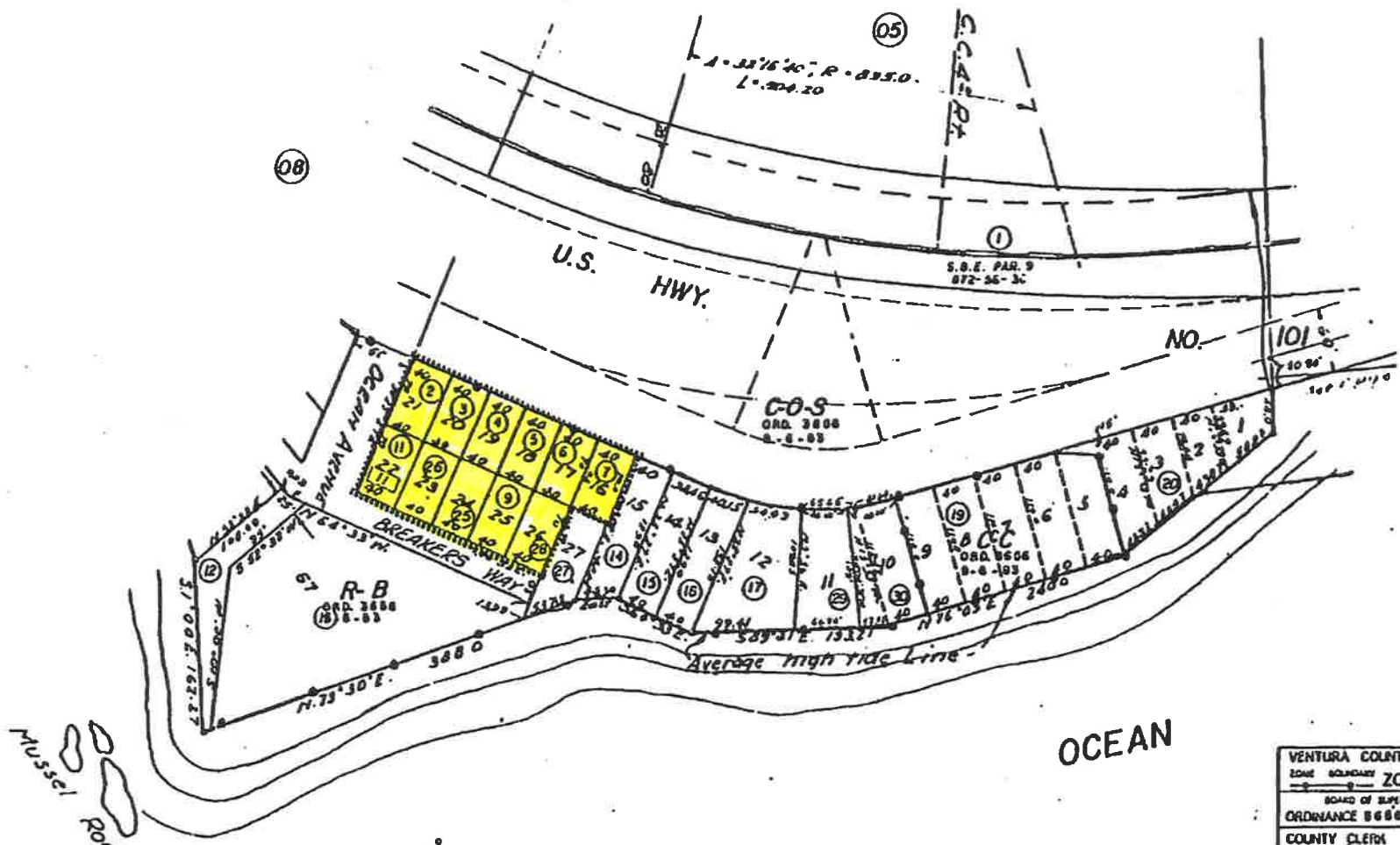
Mussel Shoals

POR. SEC. 7, T. 3 N., R. 24 W. S.B.B. & M.

Tax Rate Area
91008

60-09
Str 5 141

60-08



Mussel Rock

PACIFIC

OCEAN

Mussel Shoal Tr. 1; R.M. Bk. 12, Pg. 30

VENTURA COUNTY PLANNING DEPARTMENT
 ZONING MAP 60:09
 BOARD OF SUPERVISORS COUNTY OF VENTURA
 ORDINANCE 8686 ADOPTED 8-8-85
 COUNTY CLERK Robert L. H...
 By *Ray Hillard* Deputy

2018 ALL 6008 PARCELS SHOWN ON THIS MAP
DO NOT NECESSARILY CONSTITUTE LOCAL LOTS
CHECK WITH COUNTY SUPERVISOR'S OFFICE OR
PLANNING DIVISION TO VERIFY

NOTE - Assessor's Block Numbers Shown in Ellipses
Assessor's Parcel Numbers Shown in Circles
Assessor's Mineral Numbers Shown in Squares

Assessor's Map Bk. 60, Pg. 09
County of Ventura, Calif

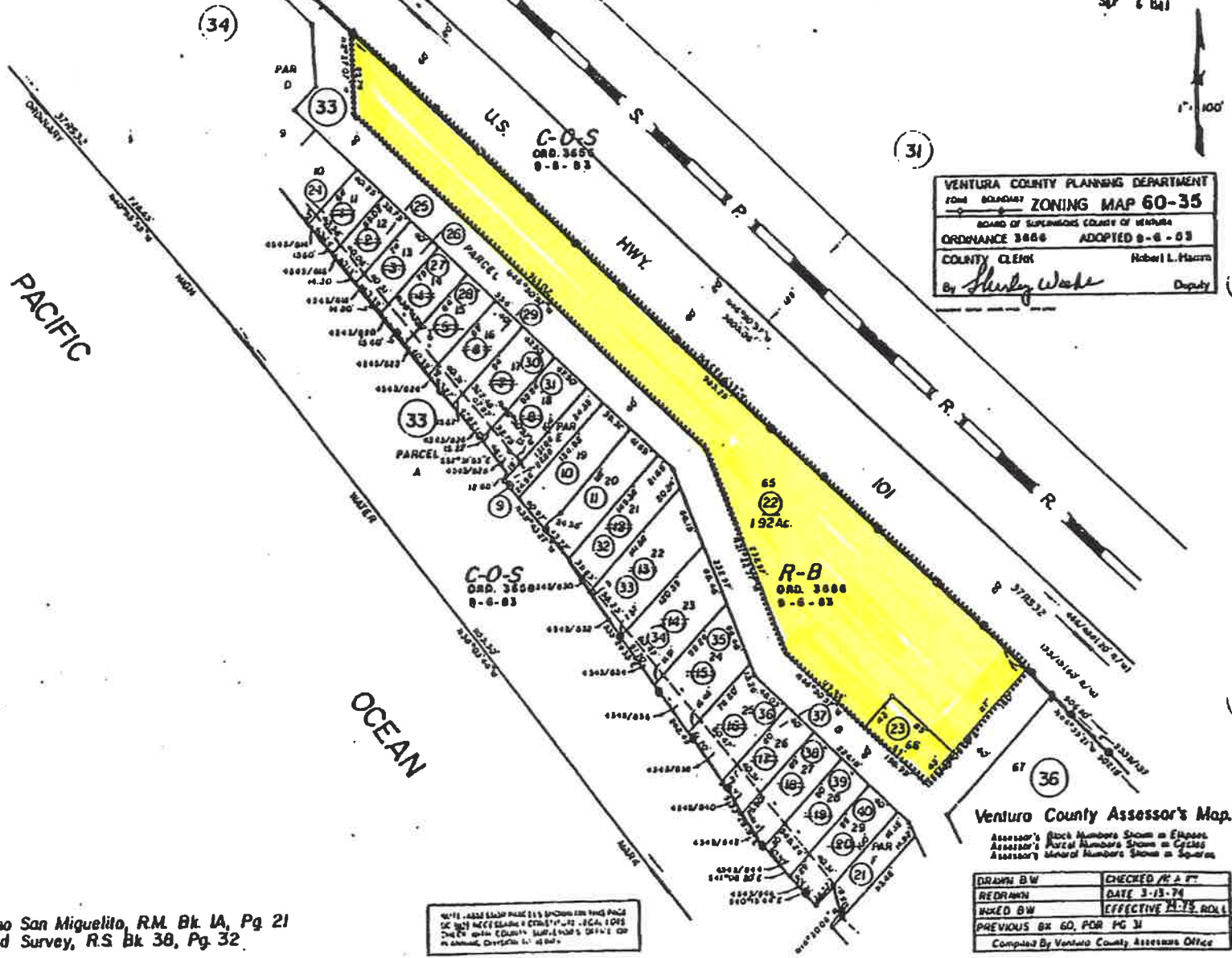
Mussel Shoals

60-35

SF 6 141

Tax Rate Area 91006

RANCHO SAN MIGUELITO



VENTURA COUNTY PLANNING DEPARTMENT
 FROM BOUNDARY ZONING MAP 60-35
 BOARD OF SUPERVISORS COUNTY OF VENTURA
 ORDINANCE 3688 ADOPTED 8-6-83
 COUNTY CLERK Robert L. Harris
 By *Shirley Woods* Deputy

Ventura County Assessor's Map.

Assessor's Block Numbers Shown in Ellipses
 Assessor's Parcel Numbers Shown in Circles
 Assessor's Acreal Numbers Shown in Squares

DRAWN BY	CHECKED BY
REDRAWN	DATE
INDEXED BY	EFFECTIVE DATE
PREVIOUS BY	PG
Compiled By Ventura County Assessor's Office	

NOTE: THIS MAP IS A SUMMARY OF THE RECORD SURVEY AND IS NOT A SUBSTITUTE THEREFOR. FOR A COMPLETE RECORD SURVEY, REFER TO THE RECORD SURVEY MAPS ON FILE IN THE COUNTY CLERK'S OFFICE.

Rancho San Miguelito, R.M. Bk. 1A, Pg. 21
 Record Survey, R.S. Bk. 38, Pg. 32

60-1011

Solimar

SEP 6 1963

NOTES: ALL THE PARCELS IN SECTION 36, TOWNSHIP 36S, RANGE 12E, COUNTY OF VENTURA, CALIFORNIA, ARE SUBJECT TO THE PROVISIONS OF ORDINANCE 3666, ADOPTED 9-6-63.

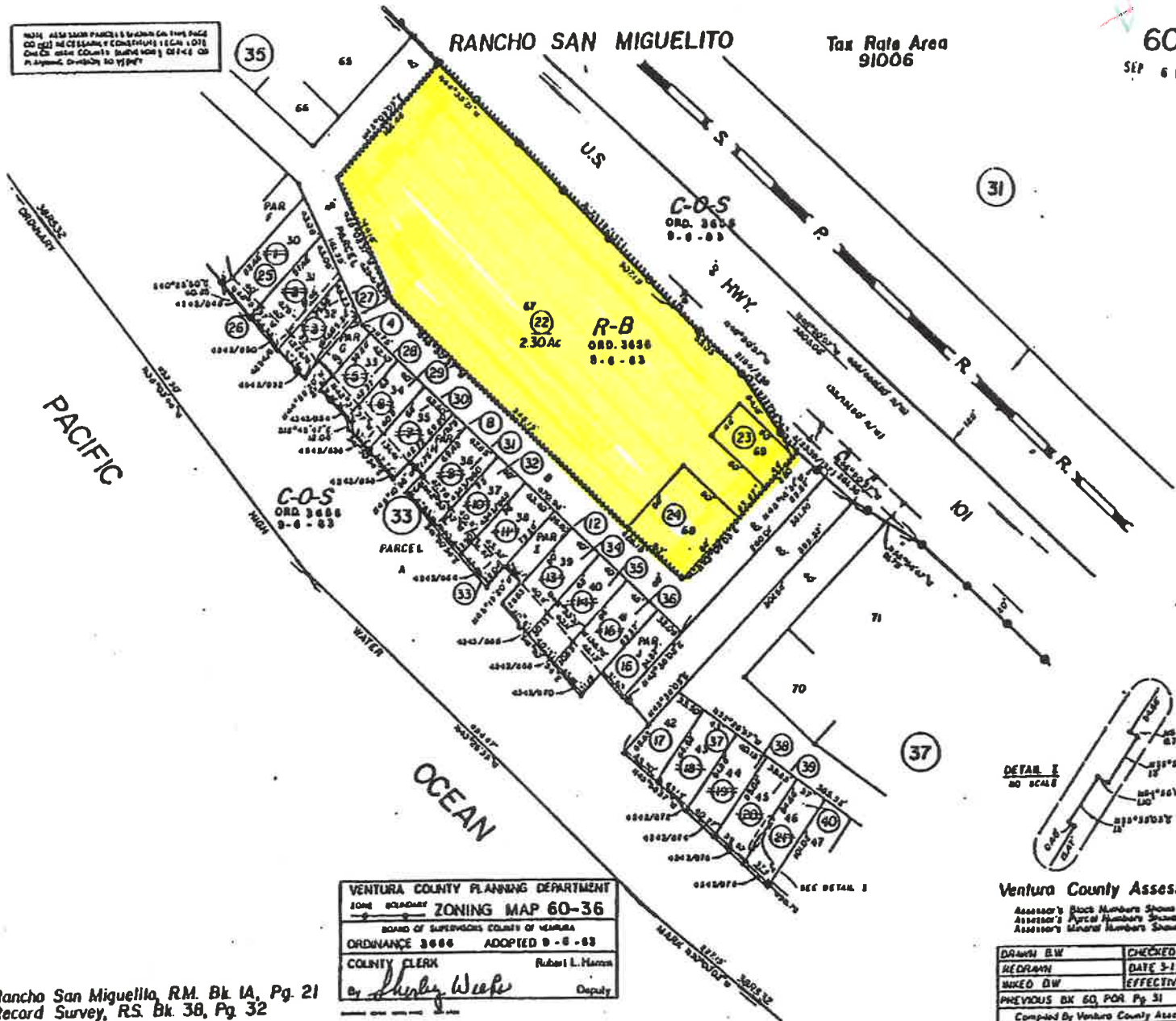
RANCHO SAN MIGUELITO

Tax Rate Area 91006

35

31

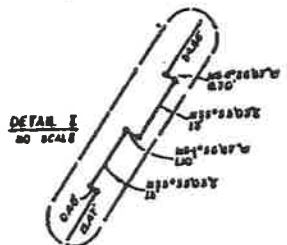
37



69-TOT1

VENTURA COUNTY PLANNING DEPARTMENT
 ZONING MAP 60-36
 BOARD OF SUPERVISORS COUNTY OF VENTURA
 ORDINANCE 3666 ADOPTED 9-6-63
 COUNTY CLERK Robert L. Harms
 by Shirley Weefe Deputy

Rancho San Miguelito, R.M. Bk. 1A, Pg. 21
Record Survey, R.S. Bk. 38, Pg. 32



Ventura County Assessor's Map

Assessor's Block Numbers Shown by Dotted Lines
Assessor's Parcel Numbers Shown in Circles
Assessor's Acreage Numbers Shown in Squares

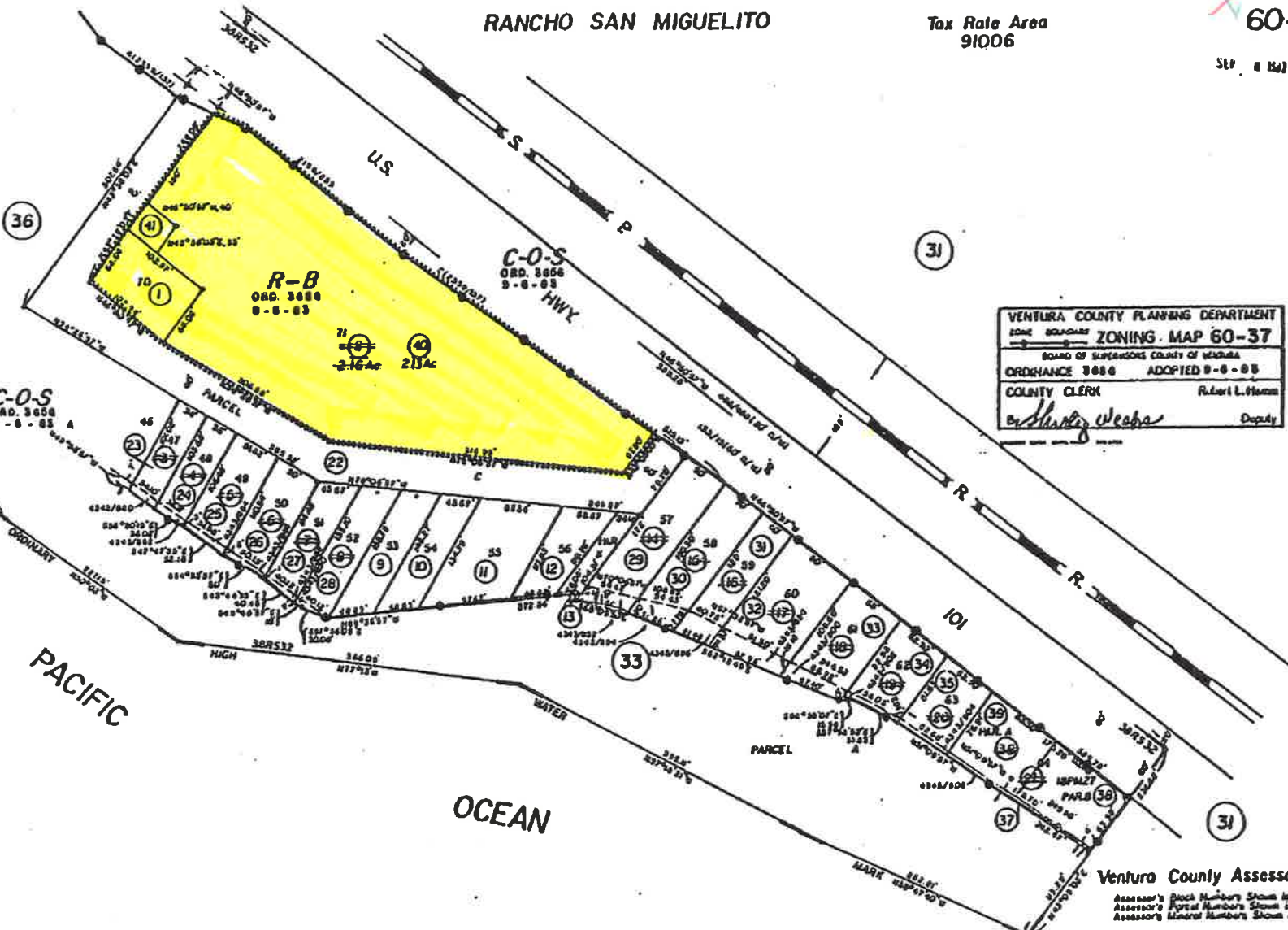
DRAWN BY	CHECKED BY
REDRAWN	DATE 3-15-74
INDEXED BY	EFFECTIVE 11-75 ROLL
PREVIOUS BK 60, PAR Pg 31	
Compiled By Ventura County Assessor's Office	

Solimar

RANCHO SAN MIGUELITO

Tax Rate Area
91006

60-37



VENTURA COUNTY PLANNING DEPARTMENT
 ZONING MAP 60-37
 BOARD OF SUPERVISORS COUNTY OF VENTURA
 ORDINANCE 3886 ADOPTED 8-8-85
 COUNTY CLERK Robert L. Hiram
Shirley Wechs Deputy

Rancho San Miguelito, R.M. Bk. IA, Pg. 21
 Record Survey, R.S. Bk. 38, Pg. 32

NOTE: ASSASSOR'S BLOCK NUMBERS SHOWN ON THIS PAGE
 DO NOT NECESSARILY CONSTITUTE LEGAL LOTS
 ONE OF WHICH COUNTY SUPERVISOR'S OFFICE CAN
 PLANNING DIVISION TO VERIFY

Ventura County Assessor's Map
 Assessor's Block Numbers Shown in Circles
 Assessor's Parcel Numbers Shown in Squares
 Assessor's Mineral Numbers Shown in Squares

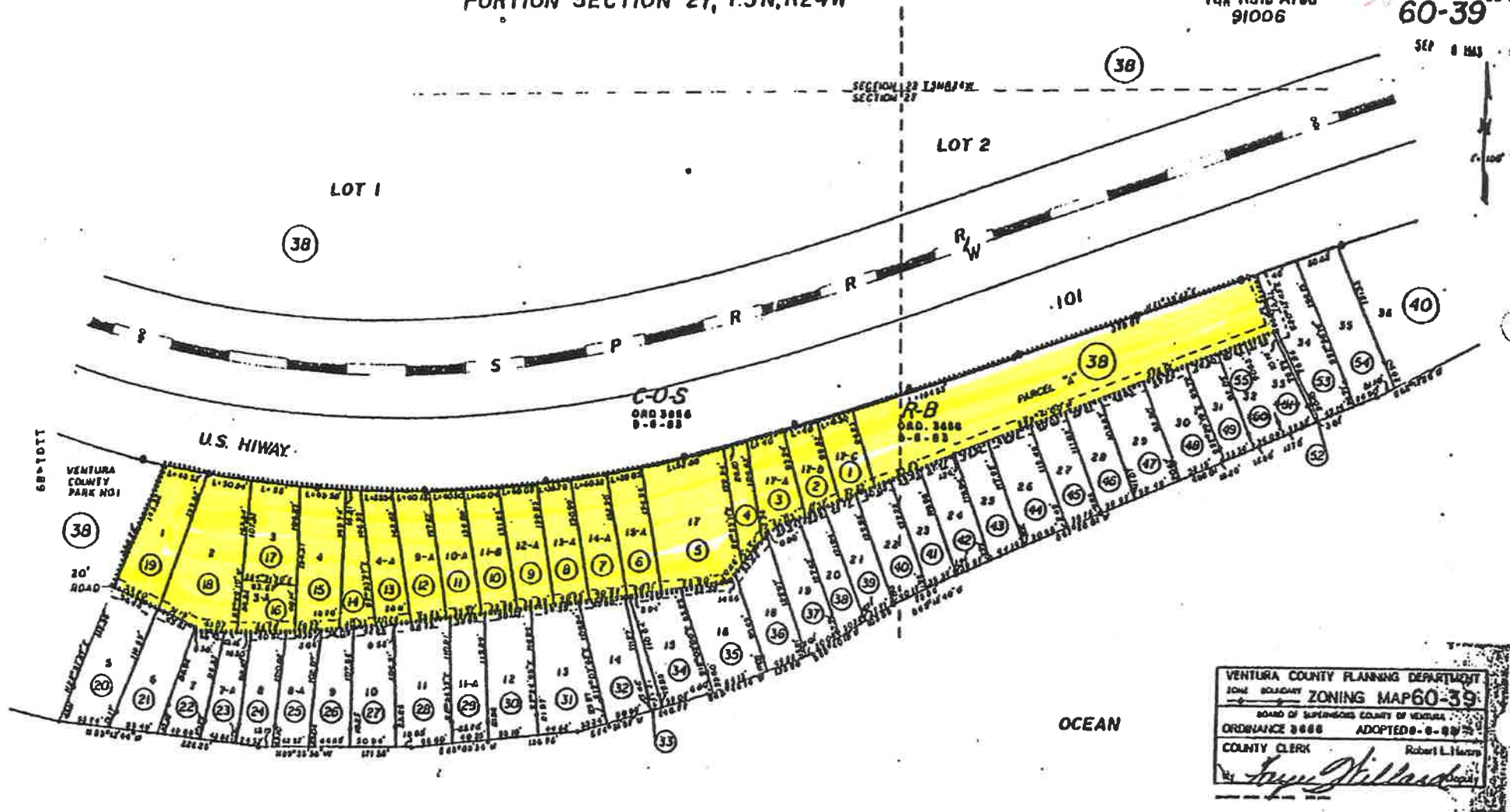
DRAWN BY	CHECKED BY
REDRAWN	DATE
INDEXED BY	EFFECTIVE
PREVIOUS Bk. 60, Pgr. Pg. 31	
Compiled By Ventura County Assessor's Office	

Solimar

PORTION SECTION 27, T.5N, R.24W

Tax Rate Area
91006

60-39



VENTURA COUNTY PLANNING DEPARTMENT
 ZONING MAP 60-39
 BOARD OF SUPERVISORS COUNTY OF VENTURA
 ORDINANCE 3666 ADOPTED 8-8-83
 COUNTY CLERK Robert L. Hickey
Ray Hillard

Ventura County Assessor's Map

Assessor's Block Numbers Shown in Ellipses
 Assessor's Parcel Numbers Shown in Circles
 Assessor's Acreal Numbers Shown in Squares

NOTE: ALL LOTS AND PARCELS SHOWN ON THIS PAGE
 DO NOT Necessarily CONSTITUTE LEGAL LOTS
 OR PARCELS UNLESS SHOWN WITH OFFICIAL
 PLANNING DIVISION 10 VENTURA

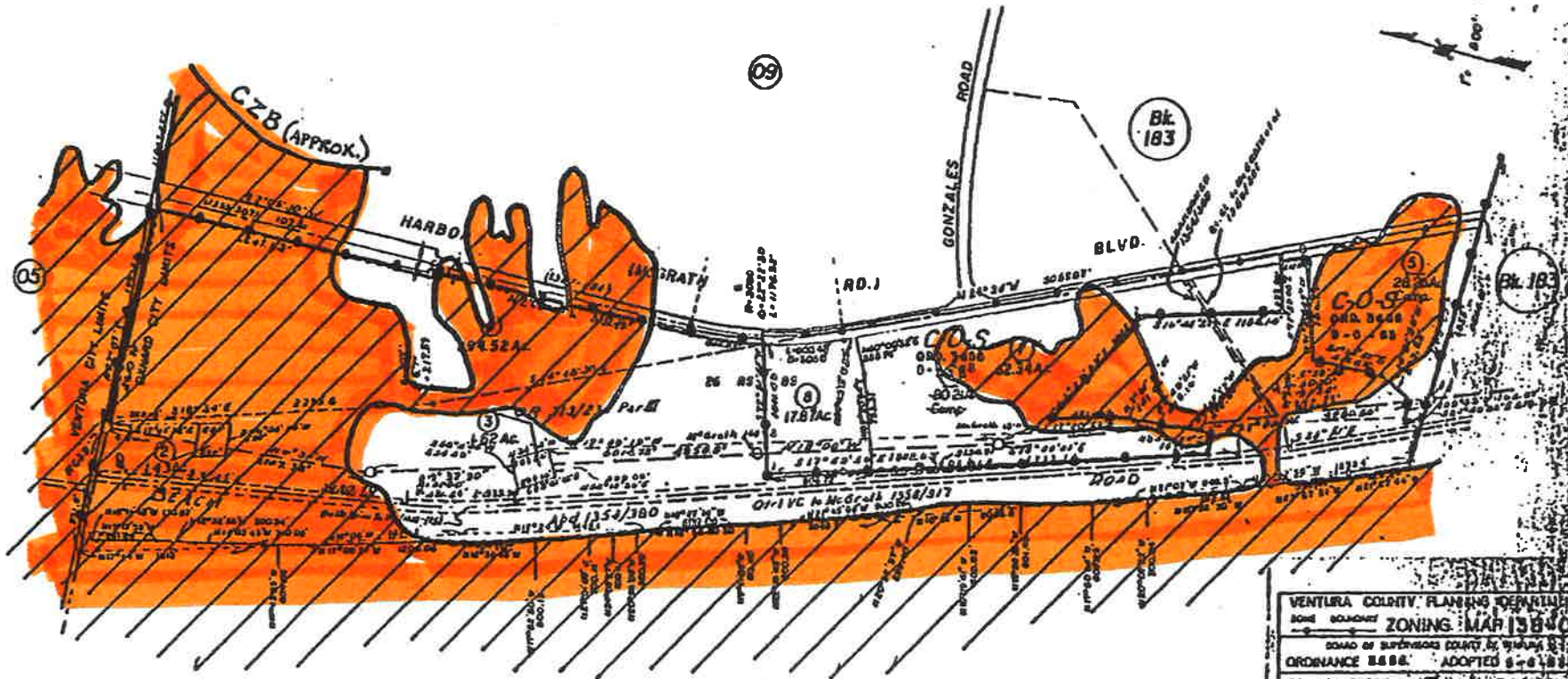
DRAWN	CHECKED
REDRAWN BY	DATE 6-15-78
INKED	EFFECTIVE 02-01-84
PREVIOUS BK. 60, POR. PG. 38	
Compiled By Ventura County Assessor's Office	

Faria Beach, R.S. Bk. 36, Pg. 27

Faria

POR RANCHO COLONIA.

Tax Rate Area **138-08**
 03042
 73012
 03105
 SEP 8 1981



VENTURA COUNTY PLANNING DEPARTMENT
 BOUNDARY ZONING MAP 138-08
 BOARD OF SUPERIORS COUNTY OF VENTURA
 ORDINANCE 1888. ADOPTED 6-6-81
 COUNTY CLERK
 By *Jay Hill*

NOTE: ASSASSOR PARCELS SHOWN ON THIS PAGE
 DO NOT NECESSARILY CONSTITUTE LEGAL LOTS
 CHECK WITH COUNTY SURVEYORS OFFICE OR
 PLANNING DIVISION TO VERIFY

CITY OF OXNARD
 & VICINITY
 Assessor's Map. Bk.138, Pg.08.
 County of Ventura, Calif.

Ro Colonia, R.M. Bk A, Pg. 399

NOTE - Assessor's Black Numbers Shown in Ellipses.
 Assessor's Parcel Numbers Shown in Circles.

183-01

183-01

Tax Rate Area

73012
73013
03040
03148
03006
03167

SEP 8 1983



See 138-08
138-09

PACIFIC

OCEAN

T.1N., T.2N., R.22W., R.23W., S.B.B. & M.

NOTE: ASSESSOR PARCELS & SHOWN ON THIS PAGE DO NOT NECESSARILY CONSTITUTE LEGAL LOTS OR LOTS WITH COUNTY CLERK'S OFFICE OR PLANNING DIVISION TO VERIFY

Ra. Colonia R.M. Bk. A, Pg. 399.
Patterson Ranch Sub. R.M. Bk. B, Pg. 1.



VENTURA COUNTY PLANNING DEPARTMENT
 ZONING MAP 183-01
 BOARD OF SUPERVISORS COUNTY OF VENTURA
 ORDINANCE 3688 ADOPTED 8-8-83
 COUNTY CLERK Robert L. [Signature]
 Deputy [Signature]

113 CITY OF OXNARD & VICINITY
 Assessor's Map Bk. 183-Pg. 01
 County of Ventura, Calif.

NOTE: Assessor's Block Numbers Shown in Ellipses
 Assessor's Parcel Numbers Shown in Circles

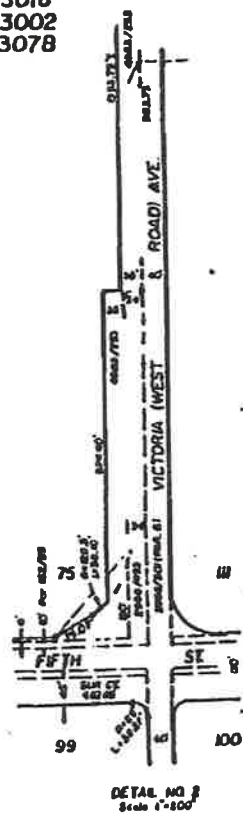
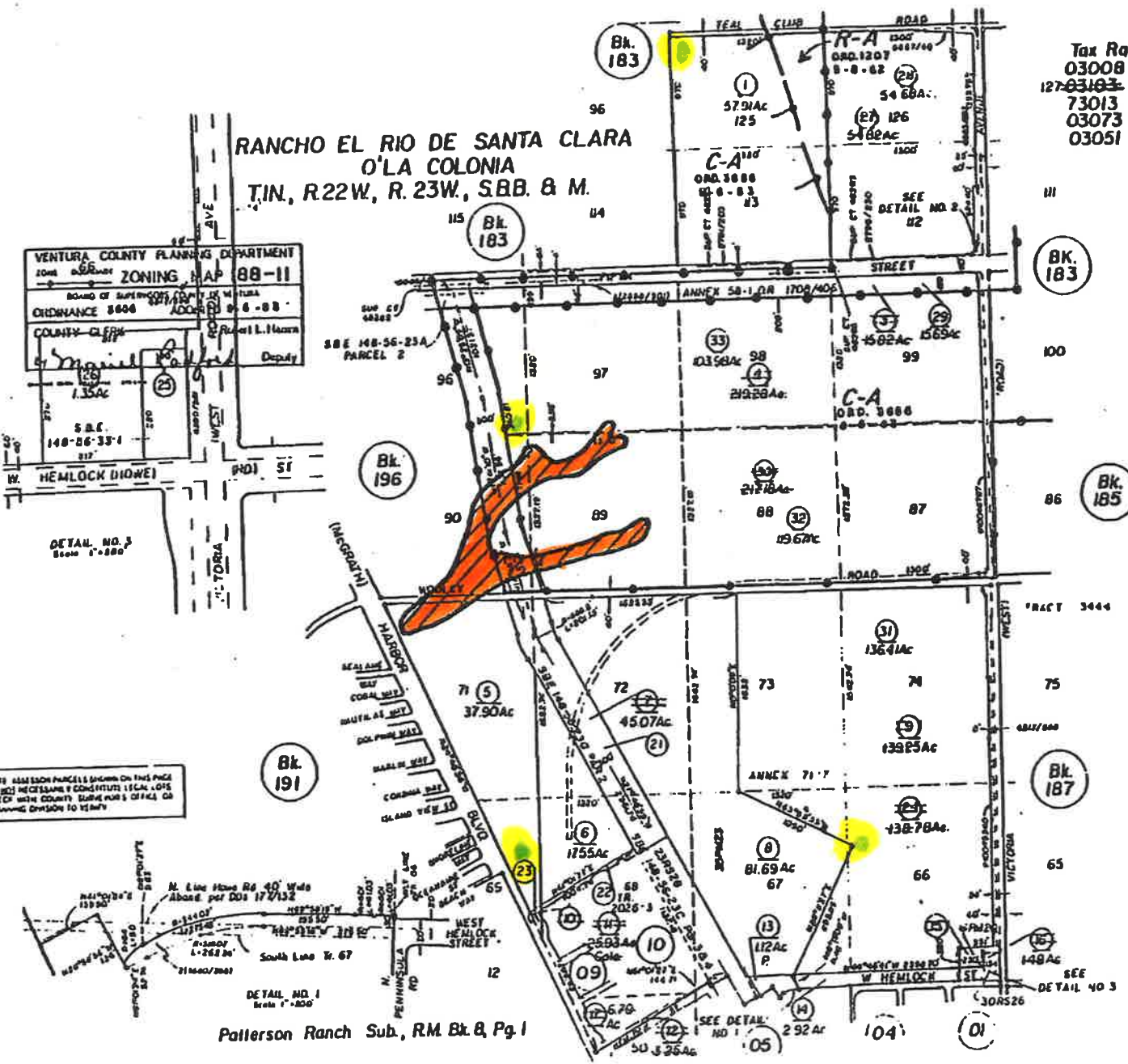
OUT

188-II
SEP 6 1981

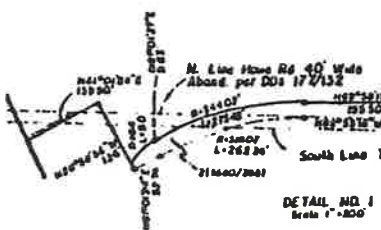
Tax Rate Area
 03008 03092
~~127-03103~~ 73002
 73013 03067
 03073 03016
 03051 03002
 03078

VENTURA COUNTY PLANNING DEPARTMENT
 ZONING MAP 88-11
 BOARD OF SUPERVISORS
 ORDINANCE 8000
 COUNTY CLERK
 Deputy

RANCHO EL RIO DE SANTA CLARA
 O'LA COLONIA
 T.1N., R.22W., R.23W., S.B.B. & M.



NOTE: ALL SECTION PARCELS SHOWN ON THIS PAGE DO NOT NECESSARILY CONSTITUTE LEGAL LOTS OR TRACTS. COUNTY SURVEYORS OFFICE OR PLANNING DIVISION TO VERIFY.



Patterson Ranch Sub., R.M. Bk. & Pg. 1

CITY OF OXNARD
 & VICINITY
 Ventura County Assessor's Map.

Assessor's Block Numbers Shown in Ellipses
 Assessor's Parcel Numbers Shown in Circles
 Assessor's Acreal Numbers Shown in Squares

DRAWN	CHECKED
REDRAWN BY	DATE 5-11-73
INDEXED BY	EFFECTIVE 7-1-73 ROLL
PREVIOUS BK 183, Pg. 08	
Compiled By Ventura County Assessor's Office	

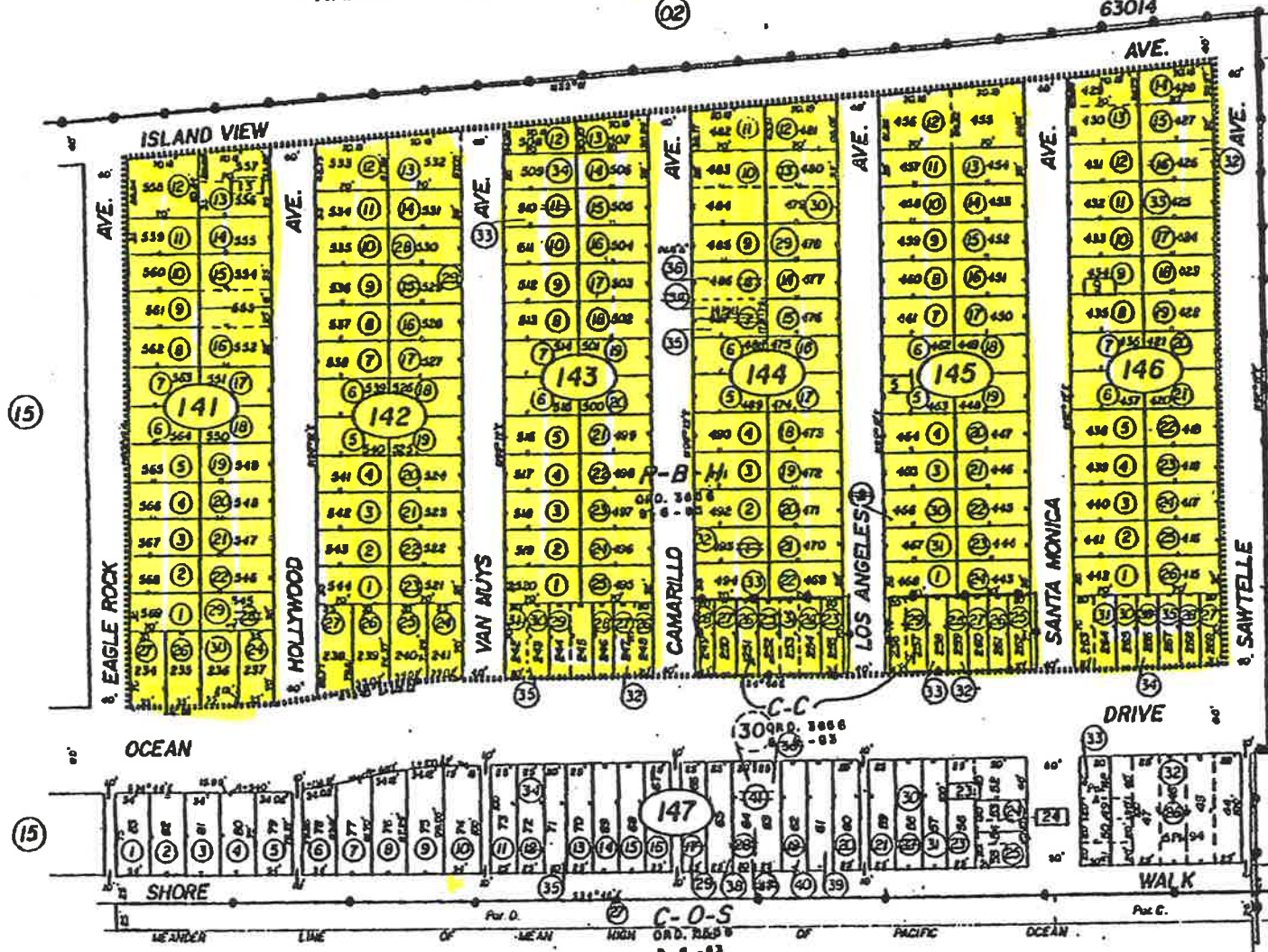
68-1011

RANCHO EL RIO DE SANTA CLARA O'LA COLONIA

(02)

Tax Rate Area
63012
63014

206-14
SEP 6 1983



VENTURA COUNTY PLANNING DEPARTMENT
LOCAL GOVERNMENT ZONING MAP 206-14
APPROVED BY VENTURA COUNTY BOARD OF SUPERVISORS
ORDINANCE 9488 ADOPTED 9-28-83
COUNTY CLERK
R. J. [Signature]

Silver Strand Tract. R.M.Bk.15, Pg.14

NOTE: SAME BLOCK PARCELS SHOWN ON THIS PAGE DO NOT MEET MINIMUM EASEMENT WIDTHS SET BY THE COUNTY PLANNING DEPARTMENT'S OFFICE OR PLANNING DIVISION TO VERIFY

NOTE: Assessor's Block Numbers Shown in Ellipses
Assessor's Parcel Numbers Shown in Circles

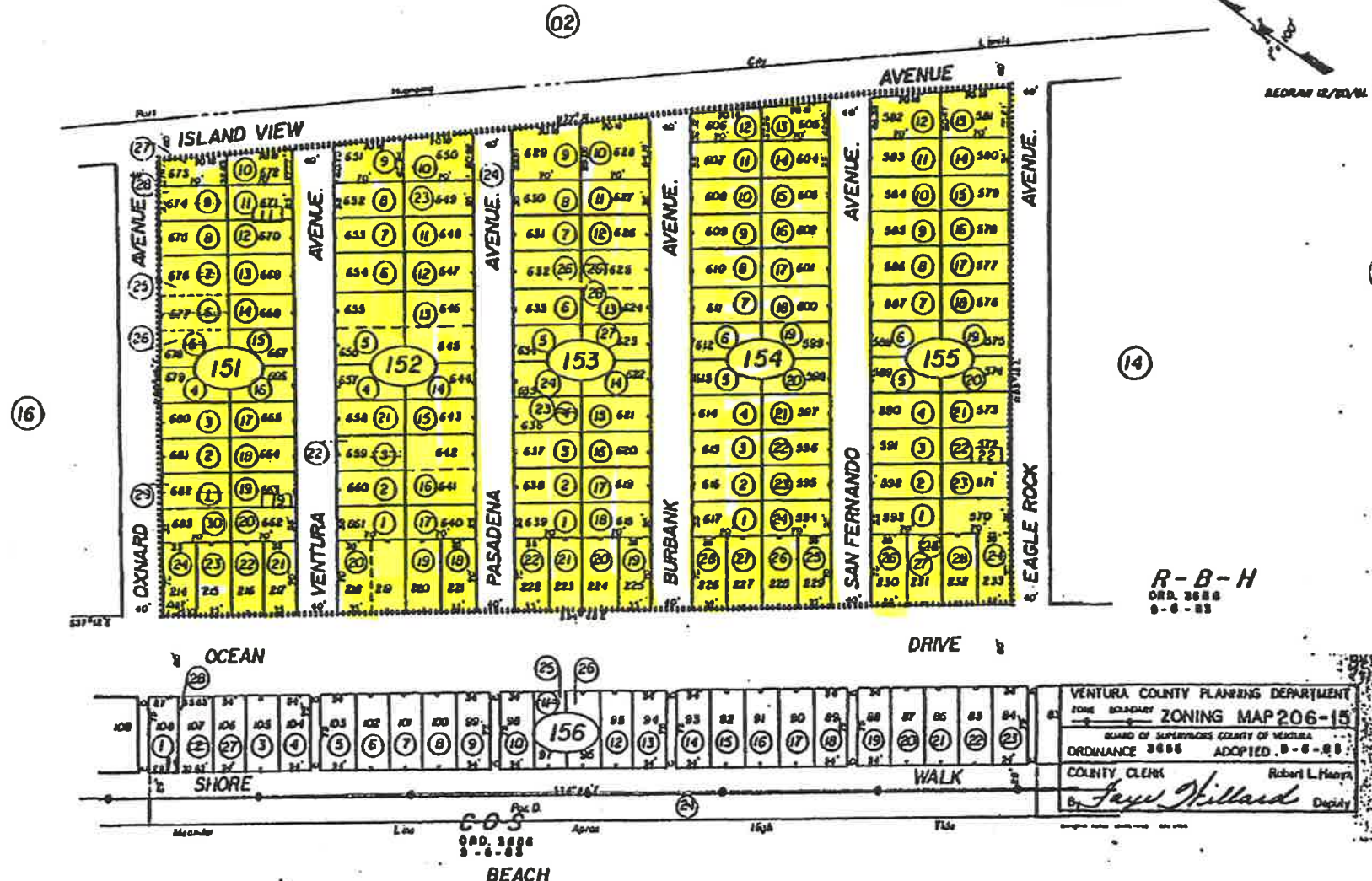
Assessor's Map Bk.206, Pg.14
County of Ventura, Calif.

Silverstrand

RANCHO EL RIO DE SANTA CLARA O'LA COLONIA

Tax Rate Area
63014
63612

206-15
SEP 8 1983



Silver Strand Tract. R.M. Bk. 15, Pg. 14

NOTE: ASSASSOR PARCEL'S SHOWN ON THIS PAGE DO NOT NECESSARILY CONSTITUTE LEGAL LOTS. CHECK WITH COUNTY SUPERVISOR'S OFFICE OR PLANNING DIVISION TO VERIFY.

Assessor's Map Bk. 206, Pg. 15.
County of Ventura, Calif.

NOTE - Assessor's Block Numbers Shown in Ellipses
Assessor's Parcel Numbers Shown in Circles

Silverstrand

RANCHO EL RIO DE SANTA CLARA O'LA COLONIA

Tax Rate Area
63012
63014

206-16
SEP 6 1981

02



Silver Strand Tract R.M. Bk. 15, Pg. 14

VENTURA COUNTY PLANNING DEPARTMENT
ZONING MAP 206-16
BOARD OF SUPERVISORS COUNTY OF VENTURA
ORDINANCE 3888 ADOPTED 9-6-83
COUNTY CLERK Robert L. Manno
By *Ann Hillard* Deputy

Assessor's Map Bk. 206, Pg. 16
County of Ventura, Calif.

NOTE: ASSESSOR PARCELS & BLOCKS ON THIS PAGE DO NOT NECESSARILY CORRESPOND TO THE CHANGES IN THE COUNTY'S BUREAU OF LAND MANAGEMENT'S ANNUAL CHANGES TO THE 1981-82 OF

NOTE - Assessor's Block Numbers Shown in Ellipses
Assessor's Parcel Numbers Shown in Circles

Silverstrand

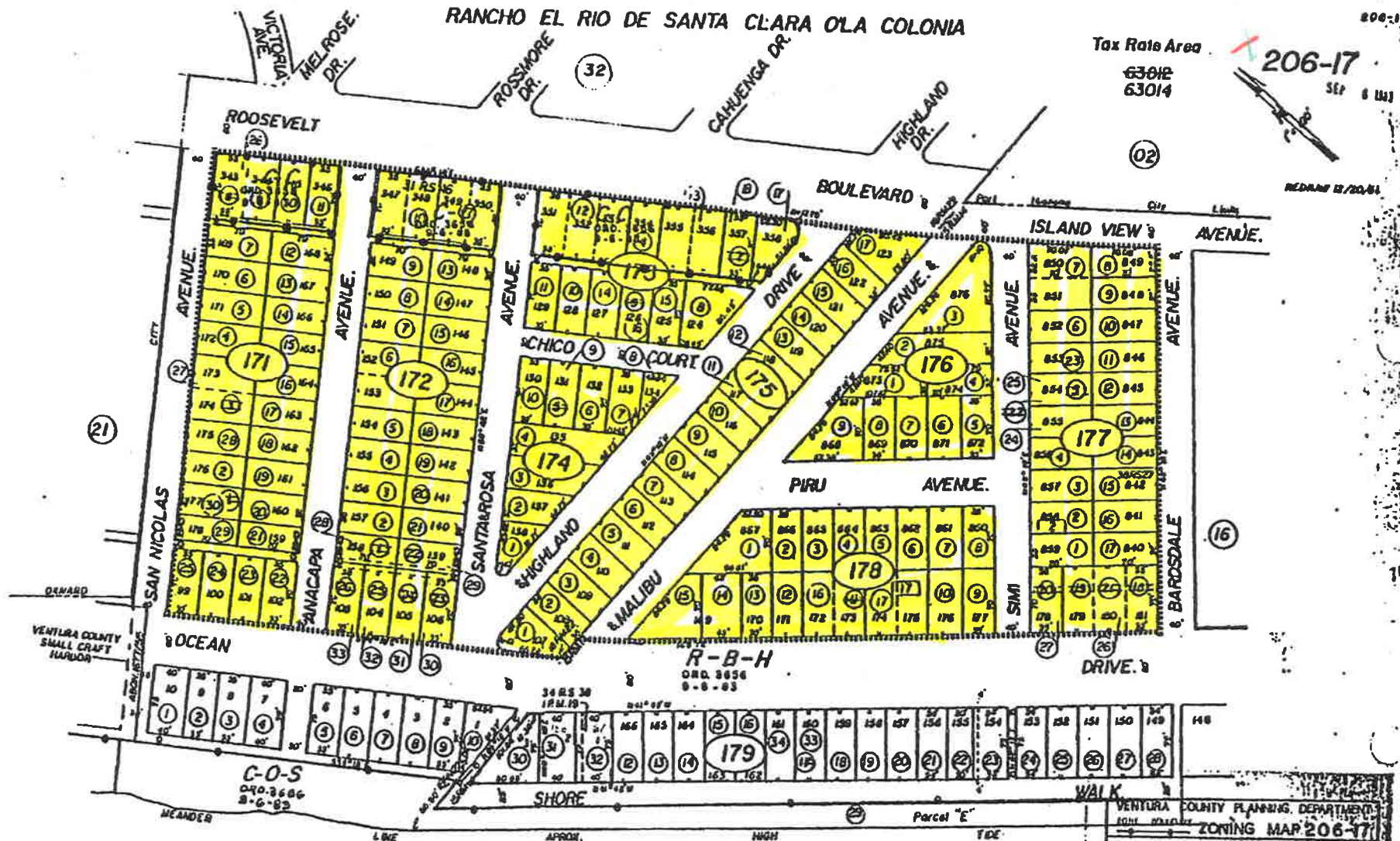
RANCHO EL RIO DE SANTA CLARA O LA COLONIA

Tax Rate Area
63012
63014

206-17

206-17

SEP 8 1981



Hollywood By The Sea.R.M.Bk.18, Pg.22.
Silver Strand Tract.R.M.Bk.15, Pg.14
Parcel Map, P.M. Bk. 1, Pg. 19

BEACH

NOTE: ALL LOTS PARCELS SHOWN ON THIS PAGE
DO NOT MEAN CLAIMS OR CONSTITUTE LEGAL TITLE
OR AS A COUNTY SURVEYOR'S OFFICE OR
PLANNING DEPARTMENT TO REPLY

Assessor's Map Bk.206, Pg.17
County of Ventura, Calif.

VENTURA COUNTY PLANNING DEPARTMENT
ZONING MAP 206-17
CITY OF SERRANO COUNTY OF VENTURA
ORDINANCE 8868 ADOPTED 6-28-81
COUNTY CLERK Robert J. Harter
By *Ray Hillard* Assessor

Silverstrand

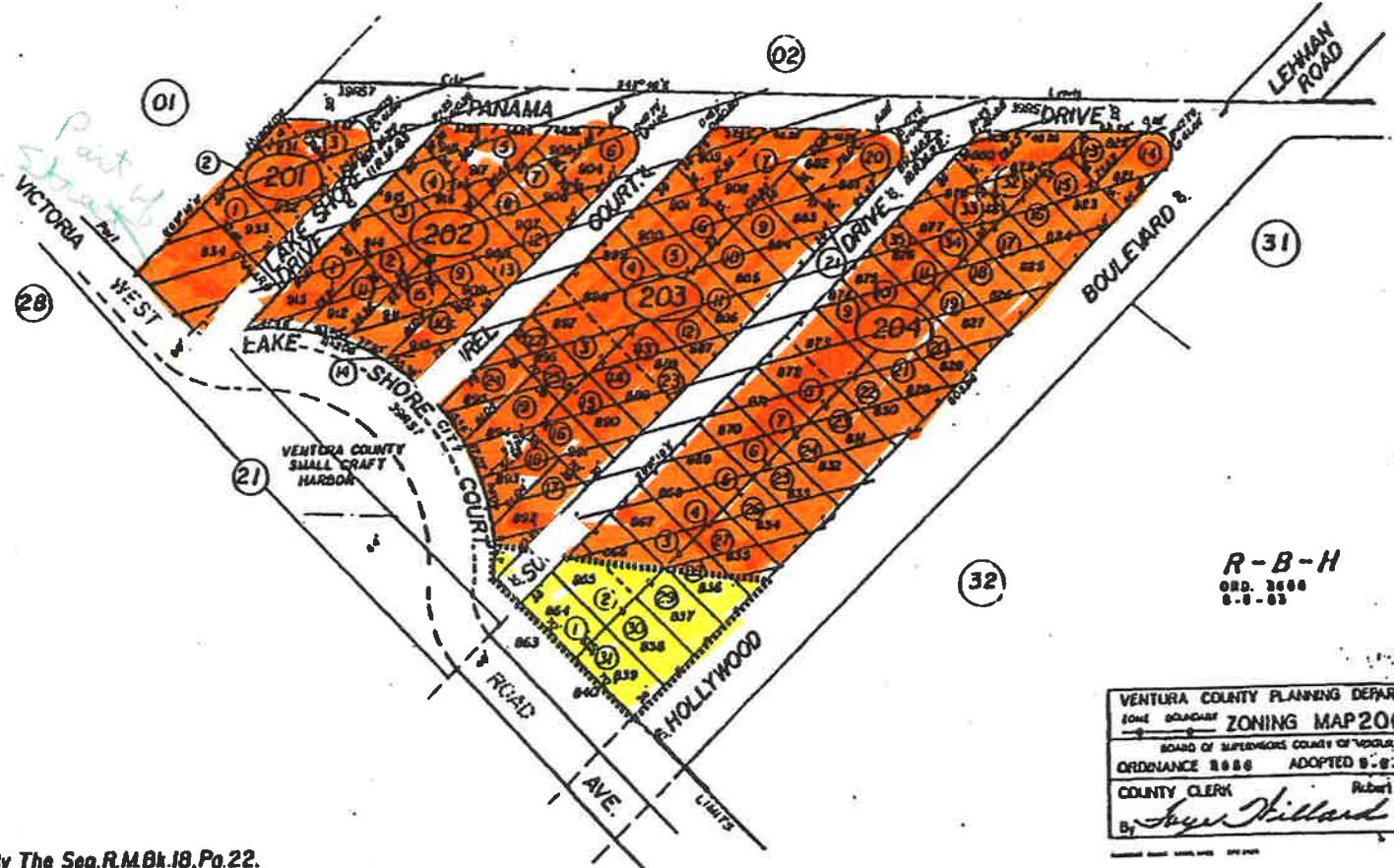
HANCHO EL RIO DE SANTA CLARA O'LA COLONIA

Tax Rate Area
63012
63014

206-20

SER 6 111

REDRAW 12/20/61



R-B-H
ORD. 2688
6-8-63

VENTURA COUNTY PLANNING DEPARTMENT	
ZONE BOUNDARY ZONING MAP 206-20	
BOARD OF SUPERVISORS COUNTY OF VENTURA	
ORDINANCE 2688	ADOPTED 6-8-63
COUNTY CLERK	Robert L. Hanson
By <i>Suzanne Willard</i> Deputy	

Hollywood By The Sea.R.M.Bk.18,Pg.22.
Lake Shore Tract.R.M.Bk.11,Pg.82

NOTE: ALL LOTS SHOWN ON THIS MAP DO NOT MEET STATE REQUIREMENTS FOR LOTS CHECK WITH COUNTY SURVEYORS OFFICE FOR PLANNING DIVISION TO VERIFY

NOTE - Assessor's Block Numbers Shown in Ellipses
Assessor's Parcel Numbers Shown in Circles

Assessor's Map Bk.206,Pg.20.
County of Ventura, Calif.

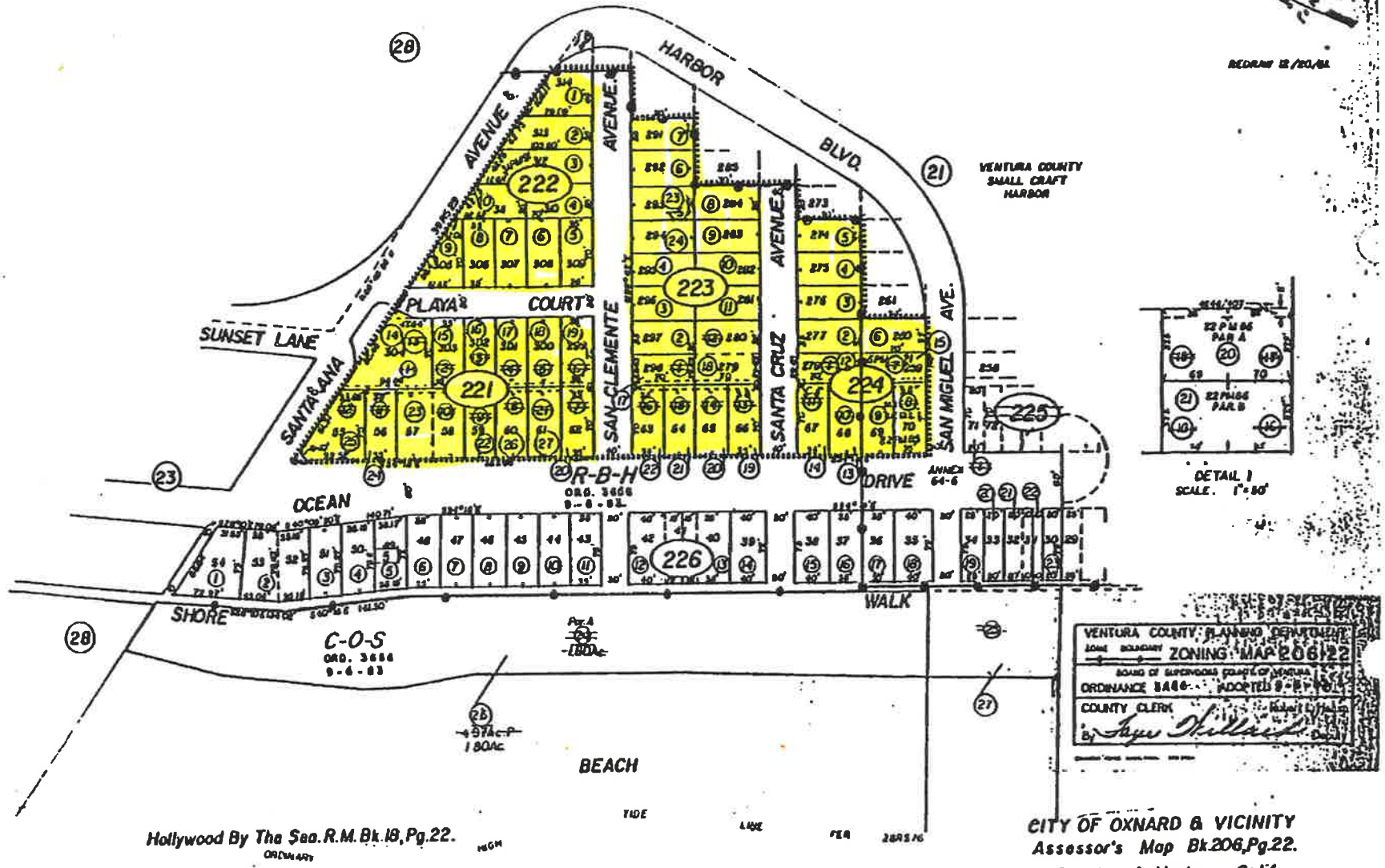
Hollywood

HANCHO EL RIO DE SANTA CLARA O'LA COLONIA.

Tax Rate Area
03077
63012

206-22

REDRM 12/20/84



VENTURA COUNTY PLANNING DEPARTMENT
ZONING MAP 206122
BOARD OF SUPERVISORS COUNTY OF VENTURA
ORDINANCE 8486... ADOPTED 8-21-76
COUNTY CLERK
[Signature]

CITY OF OXNARD & VICINITY
Assessor's Map Bk.206, Pg.22.
County of Ventura, Calif.

Hollywood By The Sea R.M. Bk. 18, Pg. 22.
ORDINARY

NOTE: ALL LOT PRICES SHOWN ON THIS PAGE
DO NOT NECESSARILY CONSTITUTE LEGAL LOTS
CHECK WITH COUNTY SURVEYORS OFFICE OR
PLANNING DIVISION TO VERIFY

NOTE - Assessor's Block Numbers Shown in Ellipse
Assessor's Parcel Numbers Shown in Circles

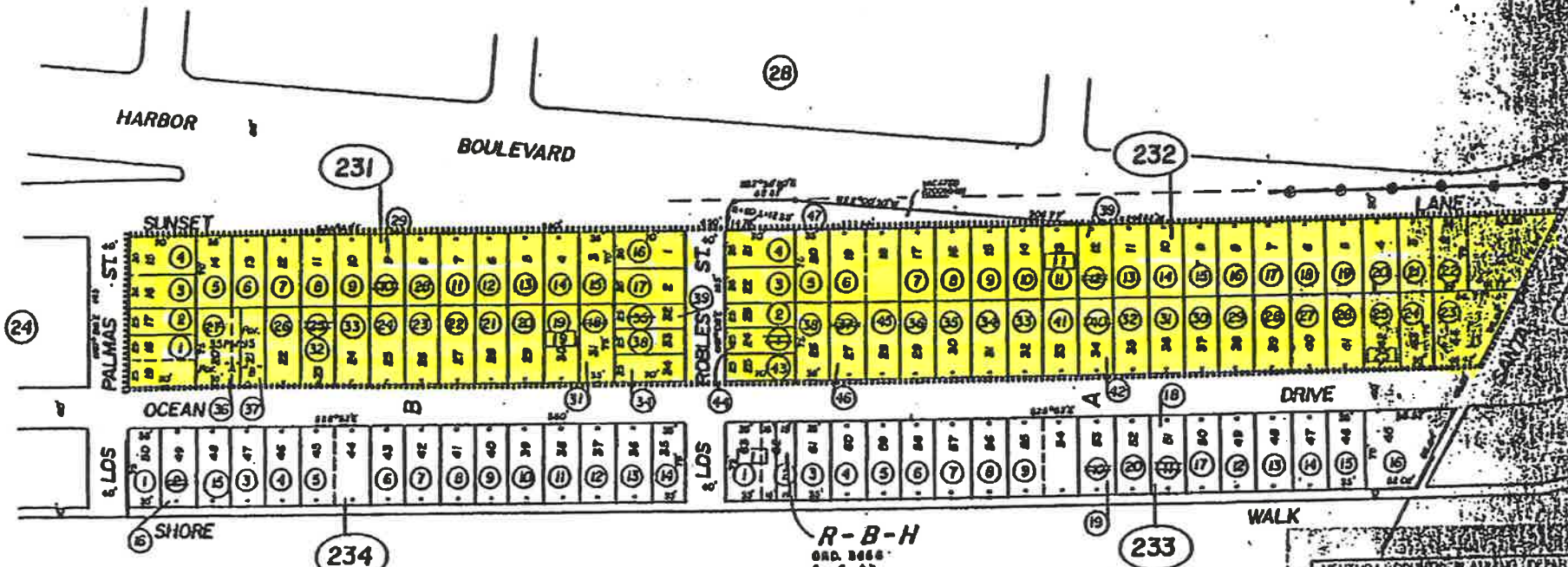
Hollywood

RANCHO EL RIO DE SANTA CLARA O'LA COLONIA

Tax Rate Area
63012

206-23

SEP 63



VENTURA COUNTY PLANNING DEPARTMENT
ZONING MAP 206-23
ADOPTED BY THE BOARD OF SUPERVISORS
ORDINANCE 58811 ADOPTED 3-4-63
COUNTY CLERK

NOTE: ASSESSOR'S PARCEL NUMBERS SHOWN ON THIS PAGE
DO NOT NECESSARILY CONSTITUTE LEGAL LOTS.
CHECK WITH COUNTY SUPERVISOR'S OFFICE OR
PLANNING DEPARTMENT YEARLY

Assessor's Map Bk. 206 Pg. 23
County of Ventura, Calif.

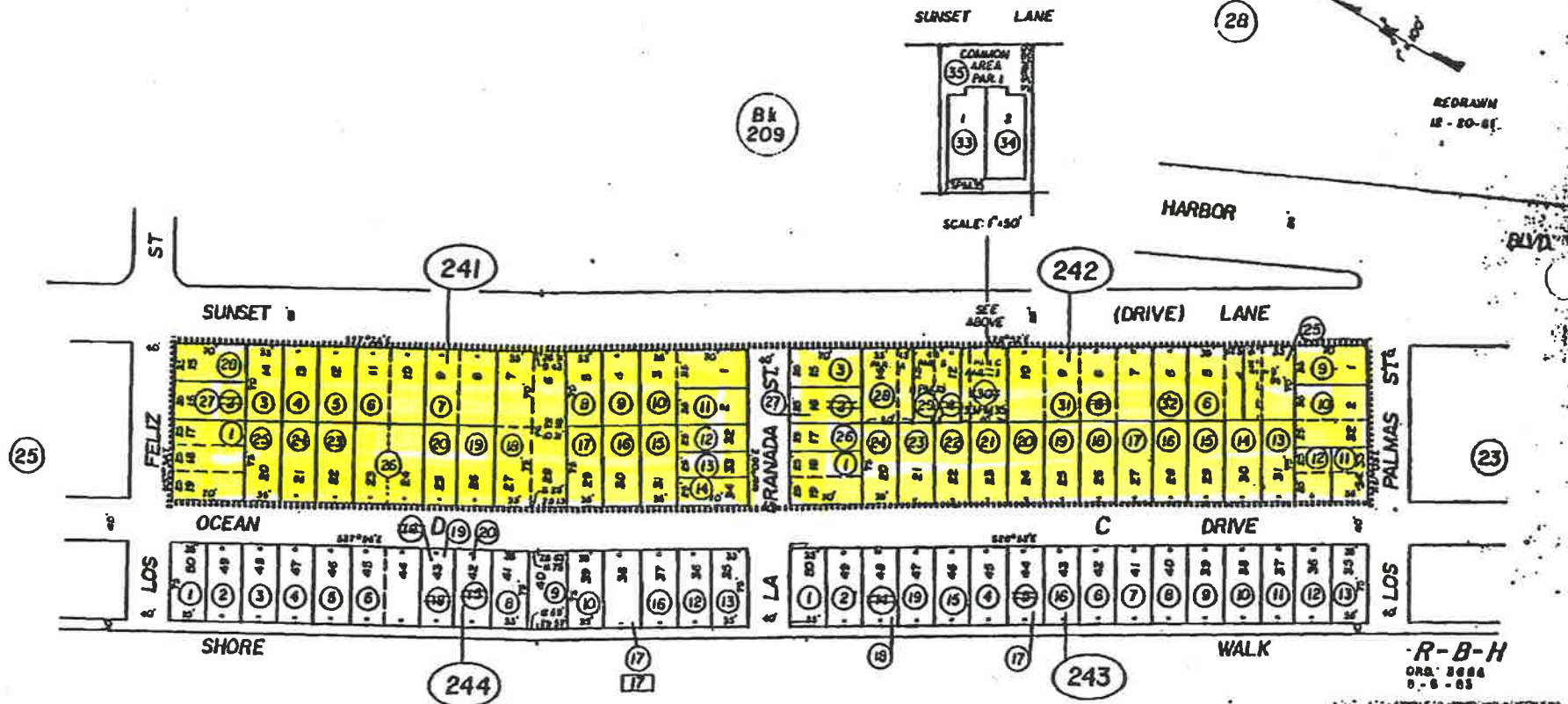
Hollywood Beach Tract, R.M. Bk. 13, Pg. 2

NOTE - Assessor's Block Numbers Shown in Ellipses
Assessor's Parcel Numbers Shown in Circles

Hollywood

RANCHO EL RIO DE SANTA CLARA O'LA COLONIA

Tax Rate Area 63012 **206-24**
 SEP 8 1983



VENTURA COUNTY PLANNING DEPARTMENT
 ZONING MAP 206-24
 BOARD OF SUPERVISORS COUNTY OF VENTURA
 ORDINANCE 2886 ADOPTED 3-1-83
 COUNTY CLERK
Sage Hillard

NOTE: ADJACENT PARCELS SHOWN ON THIS PAGE DO NOT NECESSARILY CONSTITUTE LEGAL LOTS. CHECK WITH COUNTY SURVEYORS OFFICE OR PLANNING DIVISION TO VERIFY.

Parcel 1, P.M. Bk. 33, Pg. 35 (Condo. Plan Per 810032702)
 Hollywood Beach Tract, R.M. Bk. 13, Pg. 2

NOTE - Assessor's Block Numbers Shown in Ellipses
 Assessor's Parcel Numbers Shown in Circles

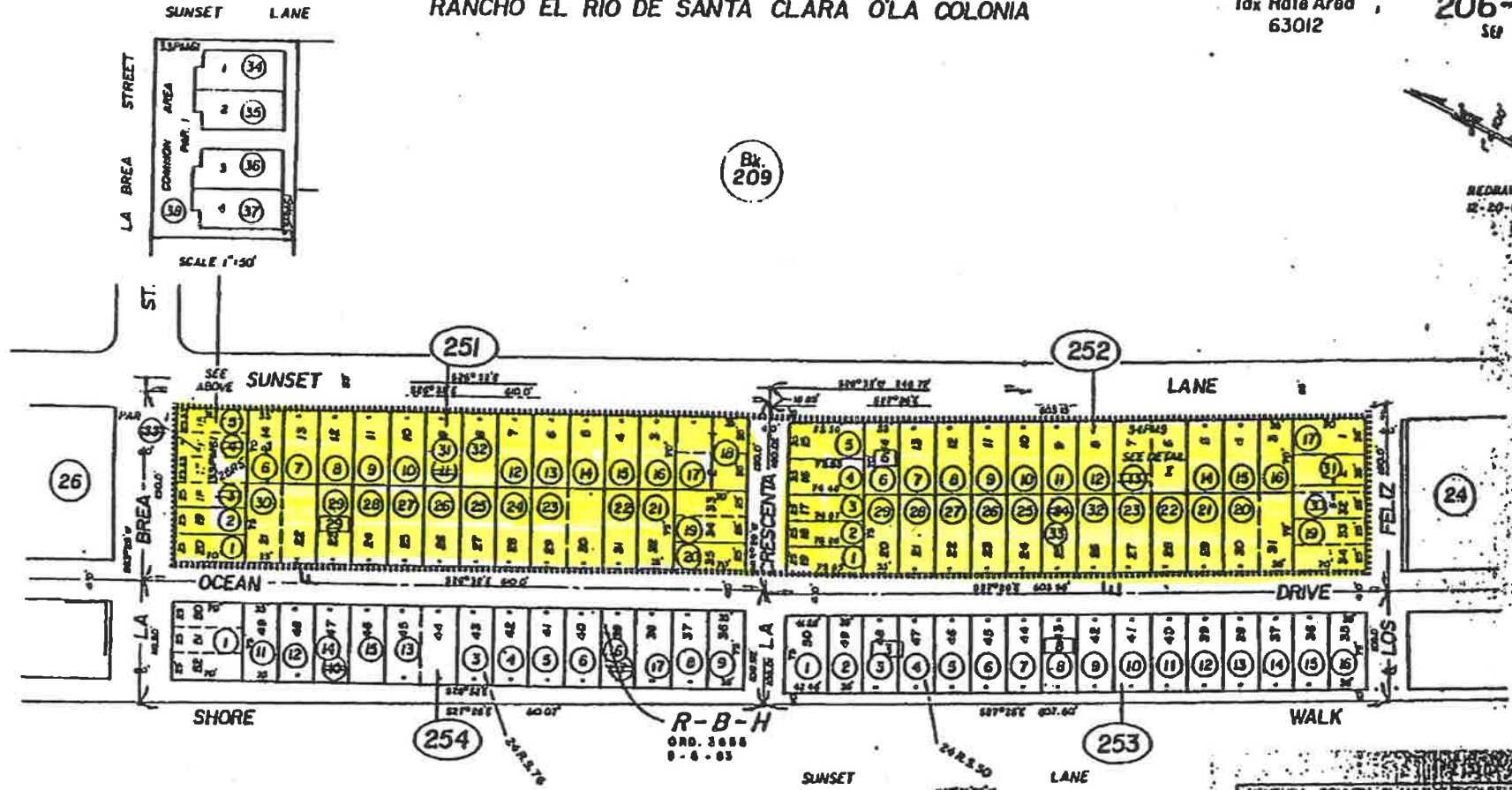
Assessor's Map Bk. 206 Pg. 24
 County of Ventura, Calif.

Hollywood

RANCHO EL RIO DE SANTA CLARA O'LA COLONIA

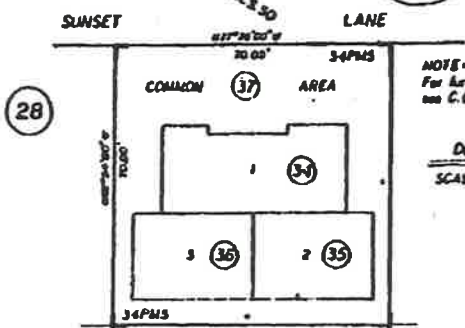
Tax Rate Area
63012

206-25
SEP 8 1963



NOTE: AREAS SHOWN PARCELS & SHOWN ON THIS PAGE DO NOT NECESSARILY CORRELATE WITH LOCAL LOT OR PARCEL MAPS. LOCAL MAPS SHOULD BE REFERRED TO FOR PARCEL INFORMATION.

Parcel Map Bk. 34, Pg. 5, (Condominium Plan 810073190)
Parcel 1, P.M. Bk. 33, Pg. 61 (Condo. Plan Per 810046338)
Hollywood Beach Tract, R.M. Bk. 13, Pg. 2



NOTE - Assessor's Block Numbers Shown in Ellipses
Assessor's Parcel Numbers Shown in Circles

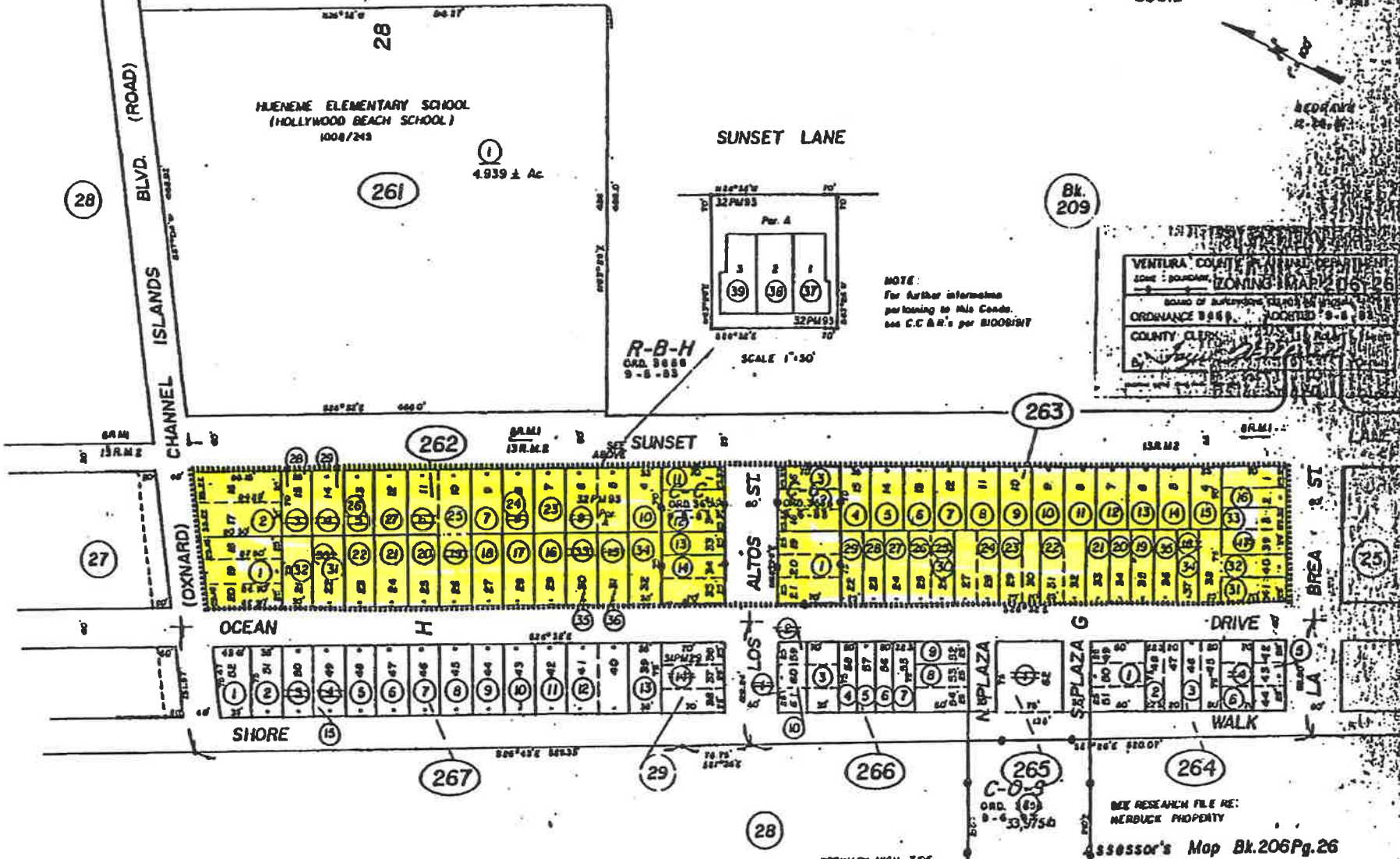
VENTURA COUNTY PLANNING DEPARTMENT
ZONING (MAR 206-25)
ORDINANCE 3688 ADOPTED 8-6-63
COUNTY CLERK
Ray Hill

Assessor's Map Bk. 206 Pg. 25
County of Ventura, Calif.

Hollywood

28 RANCHO EL RIO DE SANTA CLARA O LA COLONIA

Tax Rate Area
63008
63012
206-26
SEP 1 1981



VENTURA COUNTY PLANNING DEPARTMENT
ZONING MAP 206-26
BOARD OF SUPERVISORS REPORT ON PROPOSED
ORDINANCE 8888, ADOPTED 9-8-83
COUNTY CLERK

NOTE:
For further information
pertaining to this Condo.
see C.C. & R.'s per BIOGRAPH

R-B-H
ORD. 8888
9-8-83
SCALE 1"=50'

NOTE: ALL SHOWN PARCELS SHOWN ON THIS PAGE
DO NOT NECESSARILY CONSTITUTE LEGAL LOTS
CHECK WITH COUNTY ENGINEER'S OFFICE OR
PLANNING DEPARTMENT FOR VERIFICATION

Parcel Map, P.M. Bk. 32, Pg. 93 (Condo. Plan 810091916)
Patterson Ranch Sub., R.M. Bk. 8, Pg. 1
Hollywood Beach Tract, R.M. Bk. 13, Pg. 2

ORDINARY HIGH TIDE
LINE PER 20RS'6
NOTE - Assessor's Block Numbers Shown in Ellipses
Assessor's Parcel Numbers Shown in Circles

BK RESEARCH FILE NO:
HERBUCK PROPERTY
Assessor's Map Bk. 206 Pg. 26
County of Ventura, Calif.

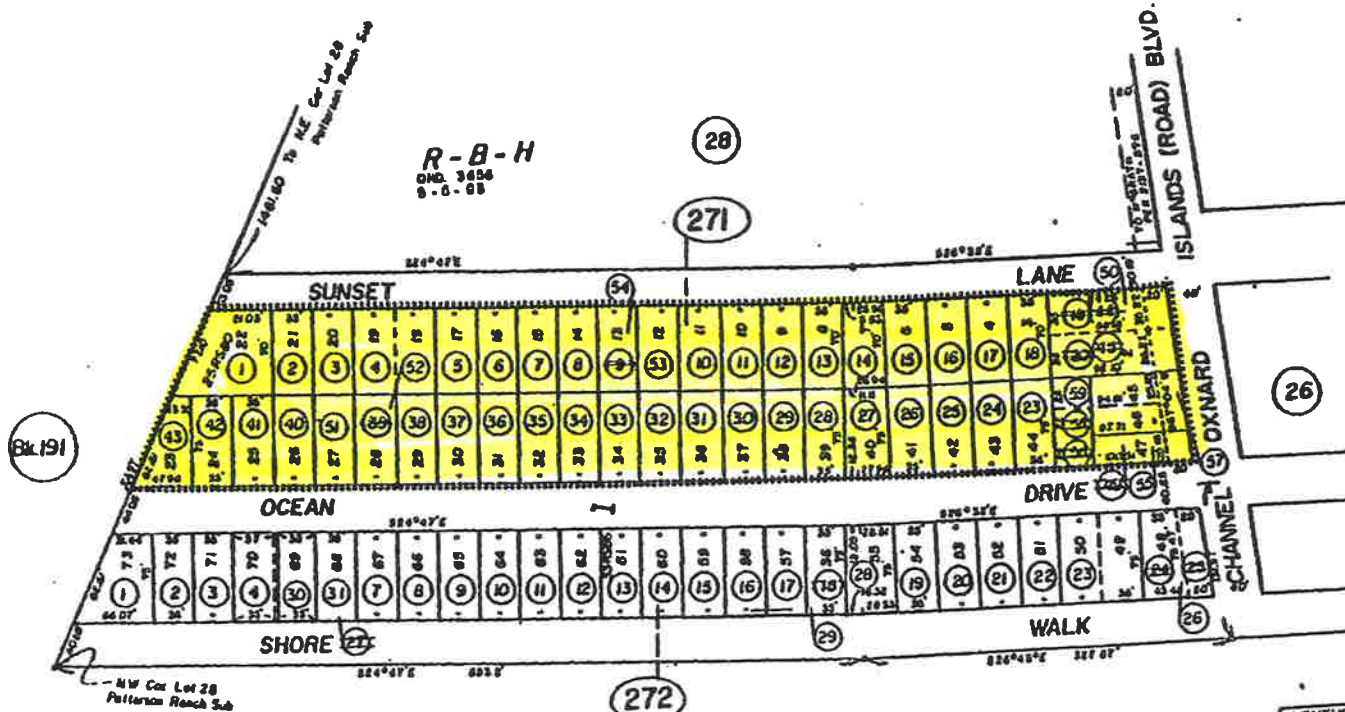
Hollywood

RANCHO EL RIO DE SANTA CLARA O'LA COLONIA

Tax Rate Area
63012

206-27
S.E. 8 1913

REDMAYN
12-22-61



VENTURA COUNTY PLANNING DEPARTMENT
10mi BOUNDARY ZONING MAP 206-2
BOARD OF SUPERVISORS COUNTY OF VENTURA
ORDINANCE 3688 ADOPTED 6-8-66
COUNTY CLERK Robert L. Haines
By *Jay Hilliard* Deputy

NOTES: ALL SHOWN PARCELS SHOWN ON THIS PAGE
DO NOT NECESSARILY CONSTITUTE LEGAL LOTS
CHECK WITH COUNTY SURVEYOR'S OFFICE OR
A SHANNON DIVISION TO VERIFY

NOTE - Assessor's Block Numbers Shown in Ellipses
Assessor's Parcel Numbers Shown in Circles

Hollywood Beach Tract, R.M. Bk.13, Pg.2

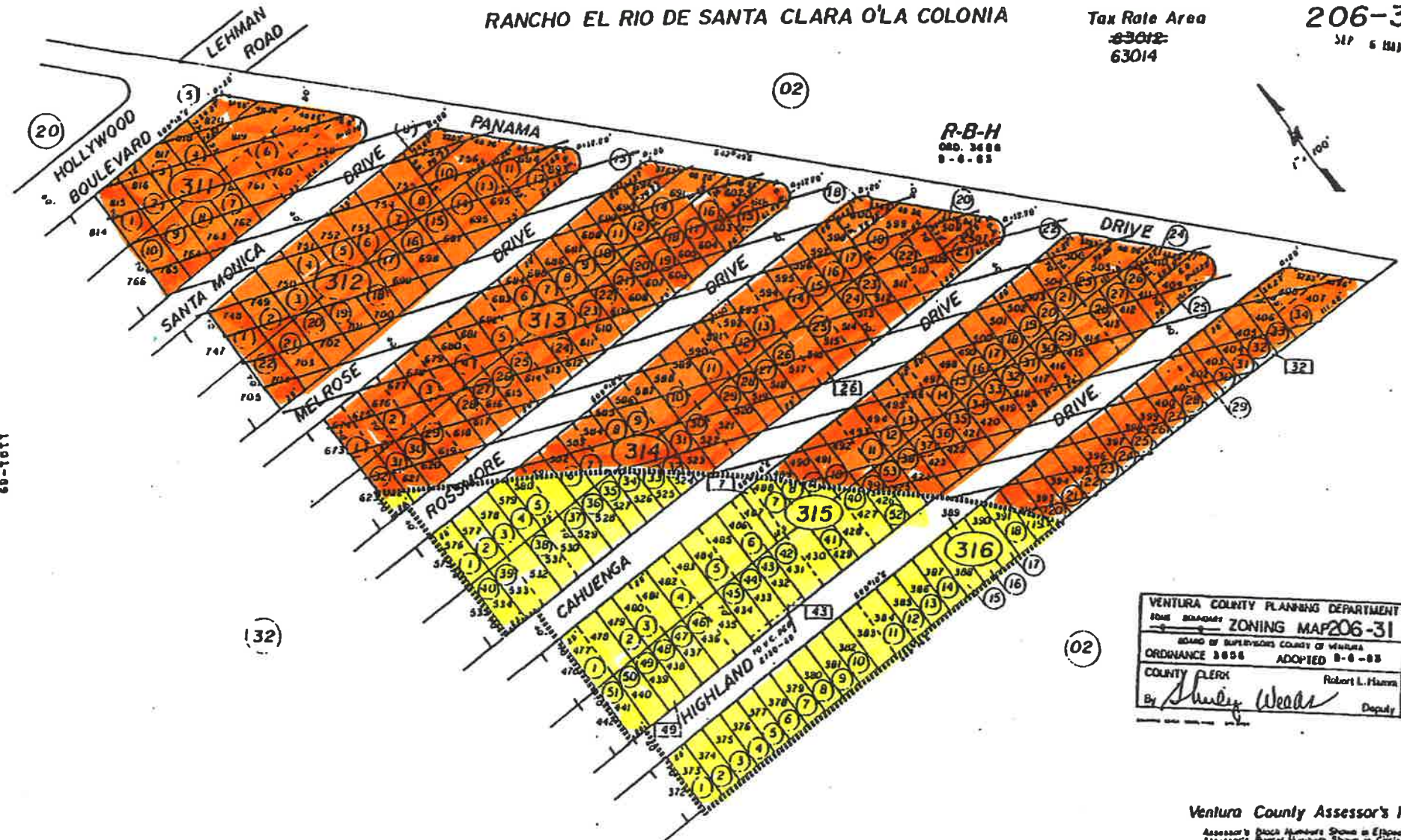
Assessor's Map Bk.206Pg.27
County of Ventura, Calif.

Hollywood

RANCHO EL RIO DE SANTA CLARA O'LA COLONIA

Tax Rate Area
~~83012~~
 63014

206-31
 317 6 111



R-B-H
 ORD. 3488
 8-8-83

VENTURA COUNTY PLANNING DEPARTMENT
 DATE SHOWN ZONING MAP 206-31
 BOARD OF SUPERVISORS COUNTY OF VENTURA
 ORDINANCE 3886 ADOPTED 8-8-83
 COUNTY CLERK Robert L. Hanna
 By *Shirley Weads* Deputy

Ventura County Assessor's Map

Assessor's Block Numbers Shown in Italic
 Assessor's Parcel Numbers Shown in Circles
 Assessor's Minor Numbers Shown in Squares

DRAWN	CHECKED
REDRAWN S E	DATE 8-3-82
MADE	EFFECTIVE <u>ROLL</u>
PREVIOUS BK 206, Portion Pgs 18 & 19.	
Compiled By Ventura County Assessor's Office	

NOTE: ASSessor PARCELS SHOWN ON THIS PAGE
 DO NOT NECESSARILY CONSTITUTE LEGAL LOTS
 OR ON THIS COUNTY'S PLANNING DEPARTMENT'S OFFICE OR
 PLANNING DIVISION TO VERIFY

Hollywood By The Sea R.M. Bk. 18, Pg. 22

Hollywood

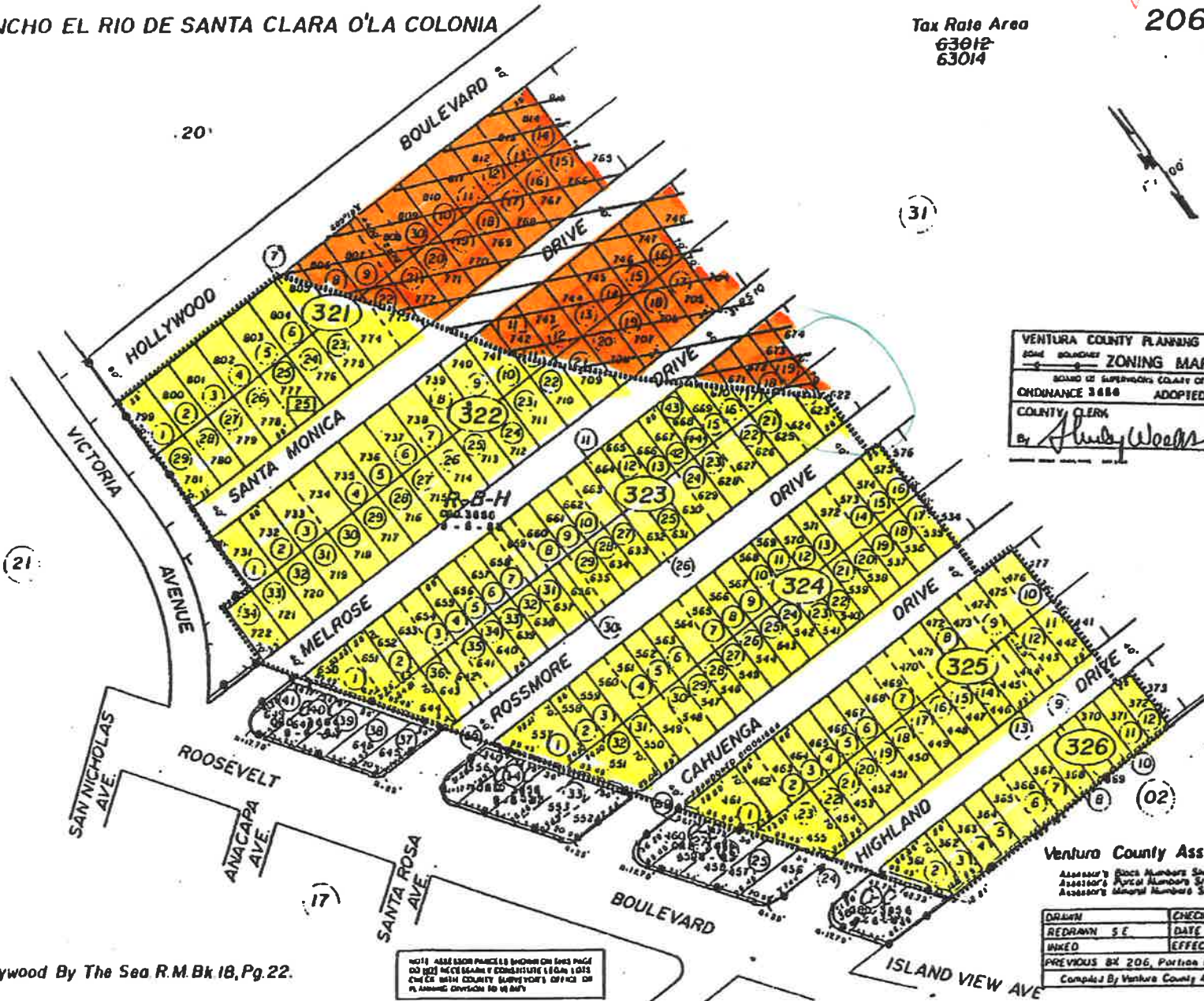
60-1011

RANCHO EL RIO DE SANTA CLARA O'LA COLONIA

Tax Rate Area
63012
63014

206-32

SHEET 6 (18)



VENTURA COUNTY PLANNING DEPARTMENT
 ZONING MAP 206-32
 BOARD OF SUPERVISORS COUNTY OF VENTURA
 ORDINANCE 3488 ADOPTED 6-8-82
 COUNTY CLERK Robert L. Harris
 By *Andy Woolm* Deputy

Ventura County Assessor's Map.
 Assessor's Block Numbers Shown in Squares
 Assessor's Parcel Numbers Shown in Circles
 Assessor's Acreal Numbers Shown in Squares

DRAWN	CHECKED
REDRAWN S E	DATE 8-3-82
MAKED	EFFECTIVE ROLL
PREVIOUS BY 206, Partion Pgs 18 & 19	
Compiled By Ventura County Assessor's Office	

NOTE: ASSESSOR PARCELS AS SHOWN ON THIS PAGE DO NOT NEEDED TO BE CONSIDERED AS OF 1982 CHECK WITH COUNTY SUPERVISOR'S OFFICE ON 1/1 ANNUAL DIVISION OF 1982

Hollywood By The Sea R.M. Bk 18, Pg. 22.

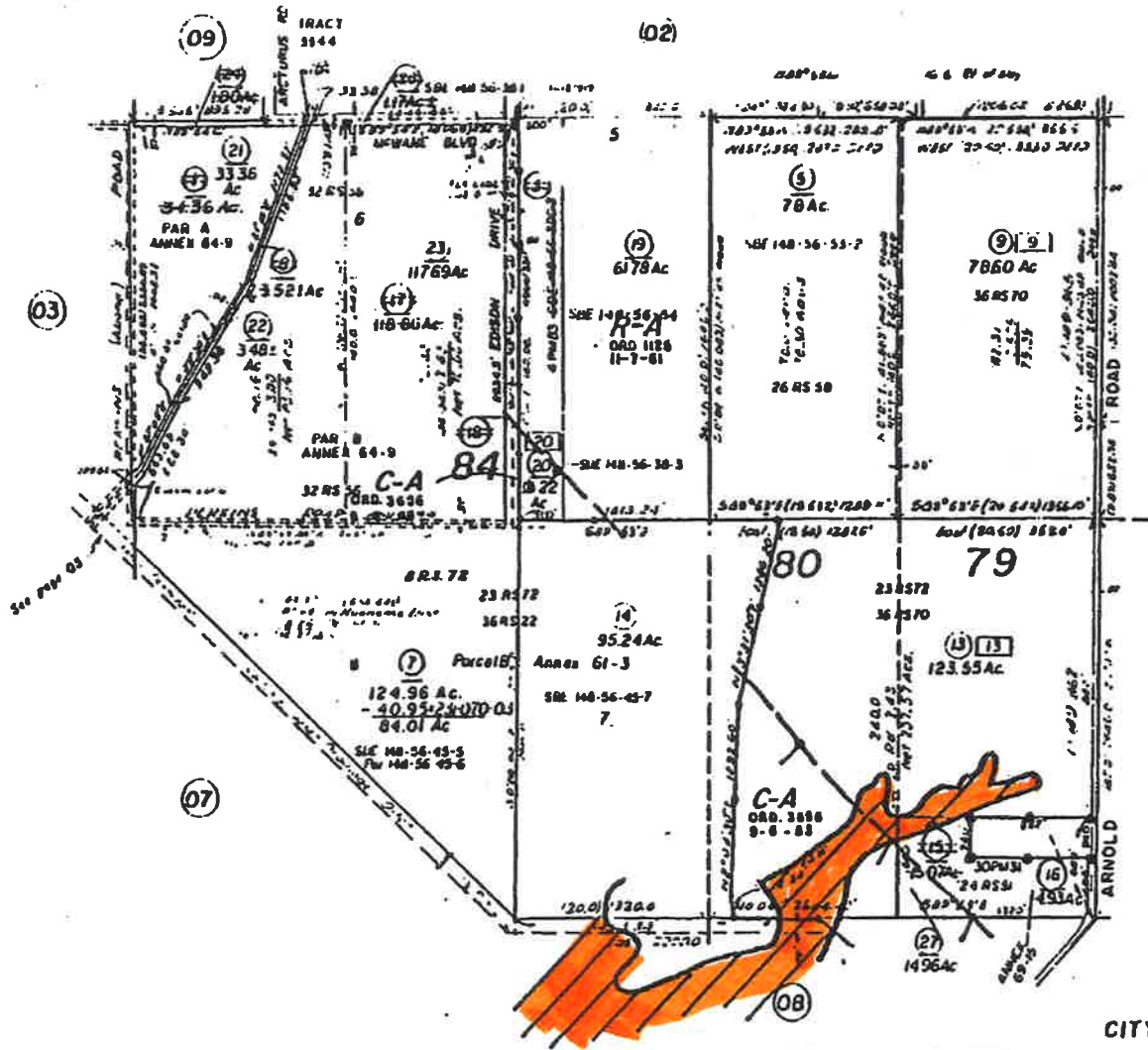
113-1011

Hollywood

POR. SUB.S 80 & 84, RANCHO EL RIO DE SANTA CLARA O' LA COLONIA

Tax Rate Area
 71006
 03011
 03026
 03030
 03043
 03062

231-04
 (S/P 6 IN)



Bk 232

VENTURA COUNTY PLANNING DEPARTMENT
 ZONING MAP 231-04
 BOARD OF SUPERVISORS COUNTY OF VENTURA
 ORDINANCE 3888 ADOPTED 8-8-83
 COUNTY CLERK Robert L. Harris
Ray Hillard Deputy

CITY OF OXNARD & VICINITY
 Assessor's Map Bk. 231 Pg. 04
 County of Ventura, Calif.

NOTE - ASSessor's BLOCK NUMBERS SHOWN IN ELLIPSES
 Assessor's PARCEL NUMBERS SHOWN IN CIRCLES

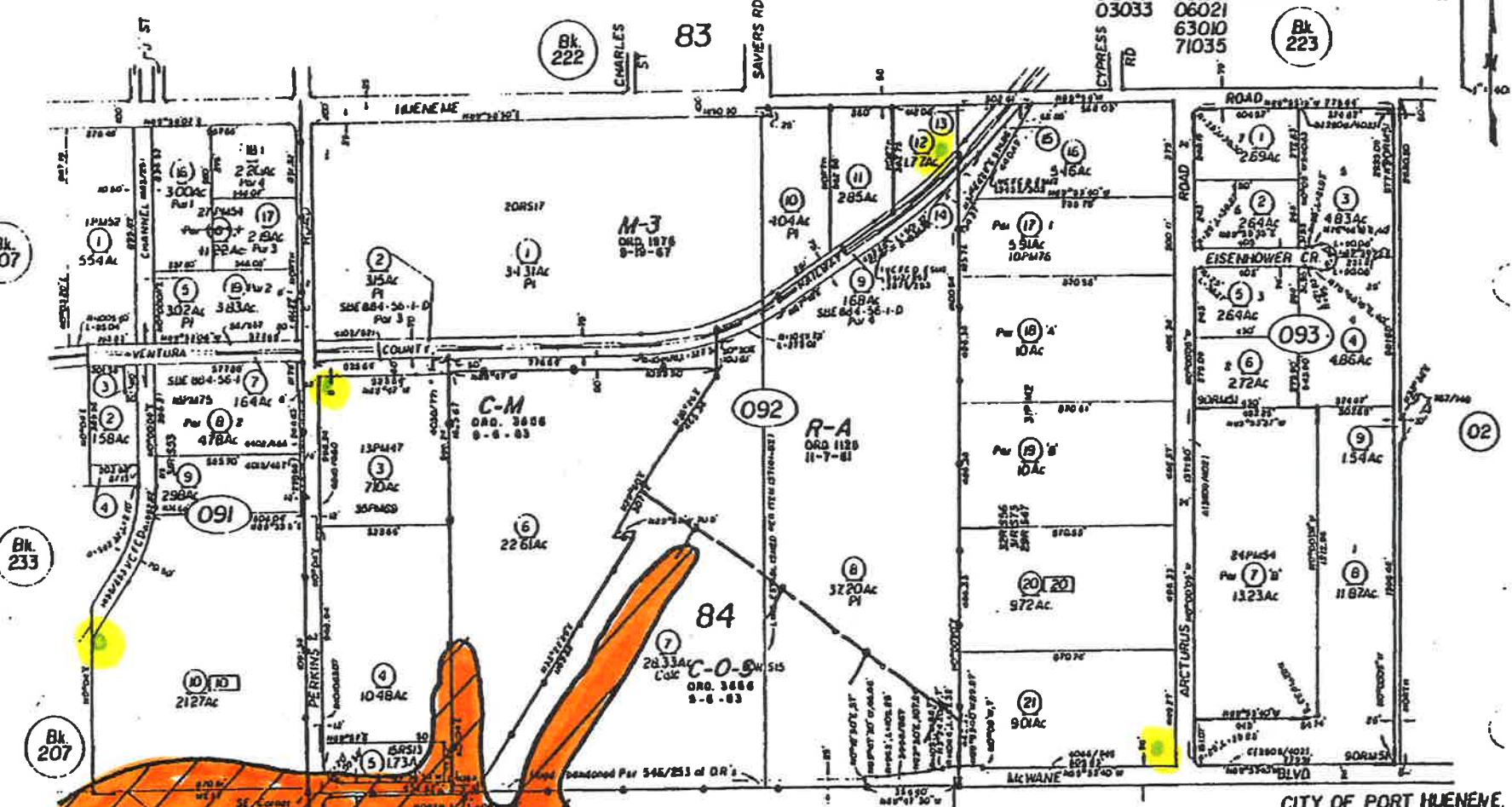
Re-Sub Ro Colonia, R.M. Bk. 3, Pg. 14

NOTE - Assessor's Block Numbers Shown in Ellipses
 Assessor's Parcel Numbers Shown in Circles

RANCHO EL RIO DE SANTA CLARA O'LA COLONIA
PORTION SUBDIVISION 84

Tax Rate Areas
03005 03072 03043
03011 03158 03071
03033 06021
63010
71035

231-09
SEP 6 1981



69-1011

VENTURA COUNTY PLANNING DEPARTMENT
ZONING MAP 231-09
BOARD OF SUPERVISORS COUNTY OF VENTURA
ORDINANCE 3486 ADOPTED 9-6-85
COUNTY CLERK Robert L. Harter
By *Jay Willard* Deputy

CITY OF PORT HUENENE,
CITY OF OXNARD & VICINITY
Ventura County Assessor's Map

Assessor's Parcel Numbers Shown in Blue on Assessor's Parcel Numbers Shown in Grey on Assessor's Aerial Numbers Shown in Red on

DRAWN	CHECKED
REDRAWN BY	DATE 2-23-82
MAILED BY	EFFECTIVE 02-08-82
PREVIOUS BK 23, PG. 01	
Compiled by Ventura County Assessor's Office	

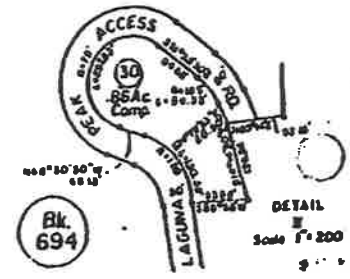
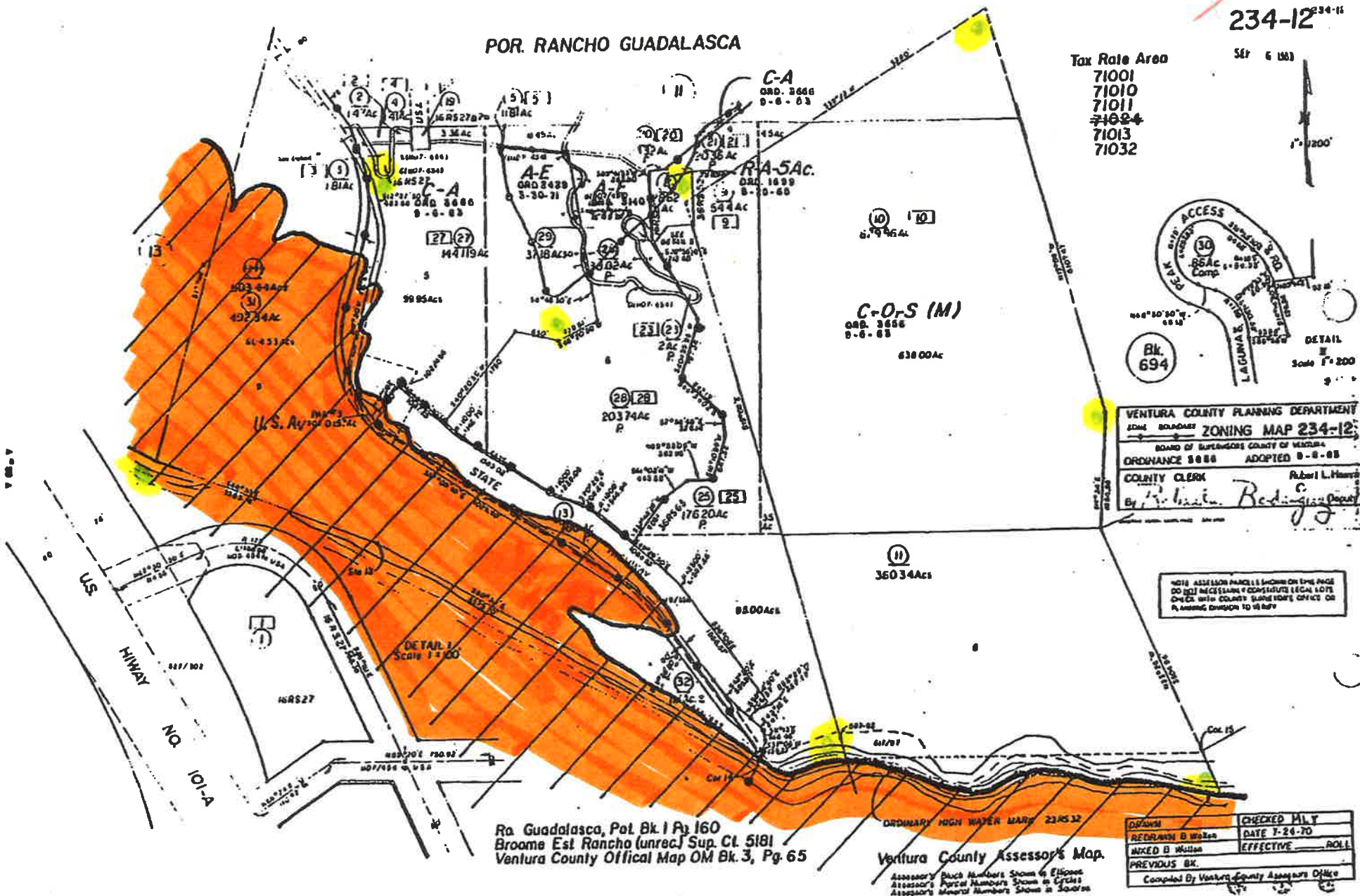
NOTE: ALL EASEMENTS SHOWN ON THIS MAP DO NOT REPRESENT RECORDS IN THE PUBLIC RECORDS WITH COUNTY CLERK'S OFFICE OR IN THE COUNTY CLERK'S OFFICE.

OUT
234-12²³⁴⁻¹¹

POR. RANCHO GUADALASCA

Tax Rate Area
71001
71010
71011
~~71024~~
71013
71032

5/1 6 1881



VENTURA COUNTY PLANNING DEPARTMENT
ZONING MAP 234-12
BOARD OF SUPERVISORS COUNTY OF VENTURA
ORDINANCE 9888 ADOPTED 9-8-85
COUNTY CLERK Robert L. Harris
By *Roberta Redington* Deputy

NOTE: ASSESSOR PARCELS SHOWN ON THIS PAGE DO NOT INCLUDE PARCELS OF 10 ACRES OR LESS. CHECK WITH COUNTY CLERK'S OFFICE OR A REVENUE DIVISION TO VERIFY.

Ra. Guadaluca, Part Bk. 1 Pg. 160
Broome Est. Rancho (unrec.) Sup. Ct. 5181
Ventura County Official Map OM Bk. 3, Pg. 65

Ventura County Assessor's Map.

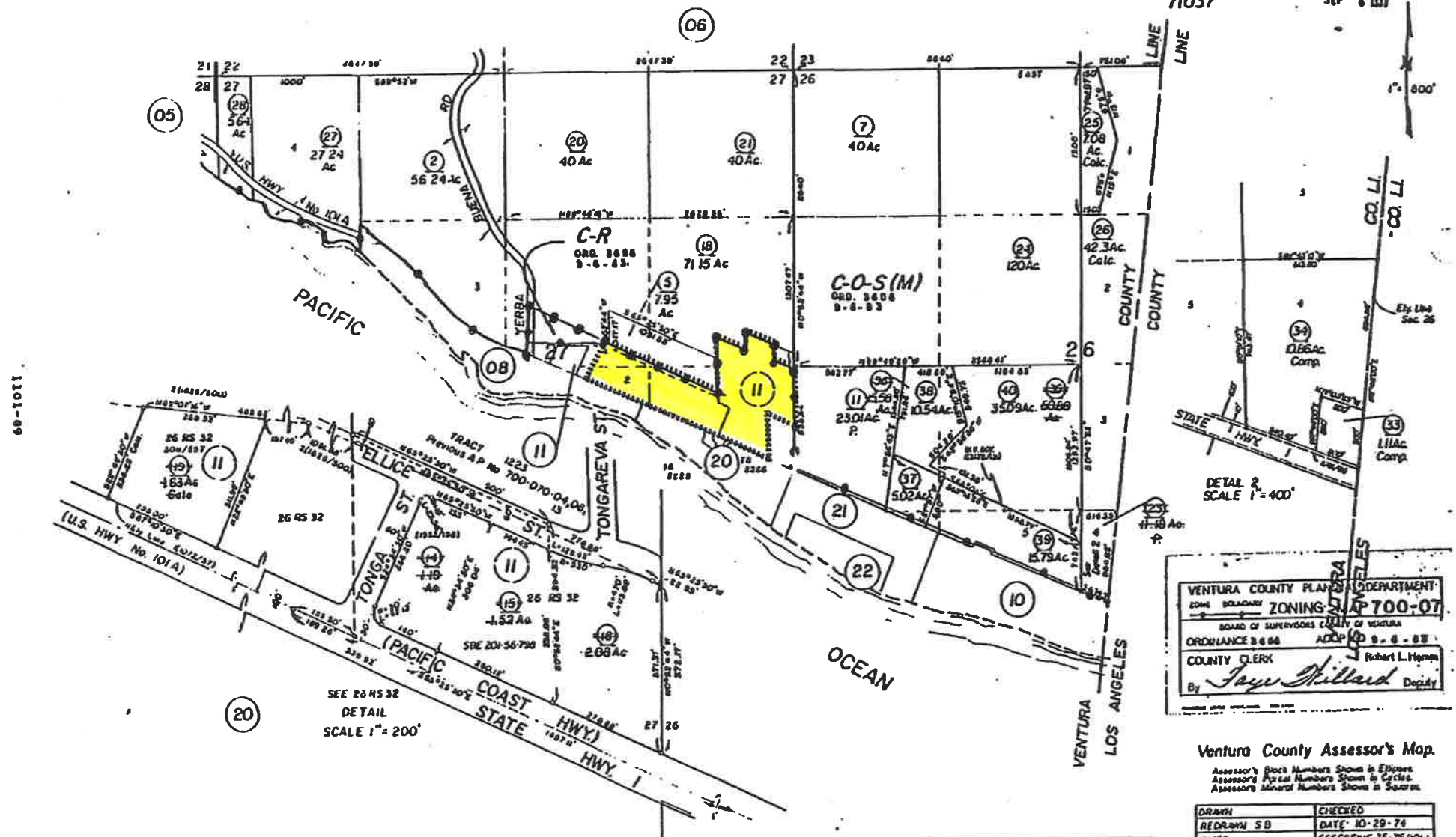
Assessor's Parcel Numbers Shown in Efficiencies
Assessor's Parcel Numbers Shown in Circles
Assessor's Parcel Numbers Shown in Squares

DRAWN	CHECKED
REDRMAN B. Walker	M.L.Y.
DATE 7-26-70	
INXED B. Wallen	EFFECTIVE
PREVIOUS BK.	ROLL
Compiled By Ventura County Assessor's Office	

SEC. 26 & 27 T.1S., R.20W. S.B.B. & M.

Tax Rate Area
71004
71037

700-07
S(1' 6" W)



VENTURA COUNTY PLANNING DEPARTMENT
 ZONING MAP 700-07
 BOARD OF SUPERVISORS COUNTY OF VENTURA
 ORDINANCE 8458 ADOPTED 9-8-83
 COUNTY CLERK Robert L. Hyman
 By *Jay Hillard* Deputy

Ventura County Assessor's Map.

Assessor's Block Numbers Shown in Figures.
Assessor's Parcel Numbers Shown in Circles.
Assessor's Acreage Numbers Shown in Squares.

DRAWN	CHECKED
RE-DRAWN SB	DATE 10-29-74
INDEXED	EFFECTIVE 15-25-ROLL
PREVIOUS BK. 700 PG 07	
Compiled By Ventura County Assessor's Office	

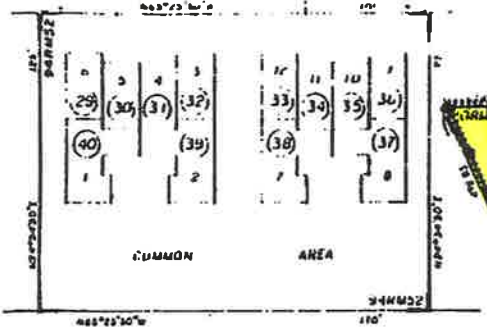
NOTE: ASSESSOR PARCELS SHOWN ON THIS PAGE DO NOT NECESSARILY CONSTITUTE LEGAL LOTS UNLESS SO INDICATED BY COUNTY SURVEYOR'S OFFICE OR BY A MAP OF RECORD TO THE PUBLIC.

SEE 26 45 32
DETAIL
SCALE 1" = 200'

DETAIL 2
SCALE 1" = 400'

69-1011

700-11
 100-11
 11/6/11



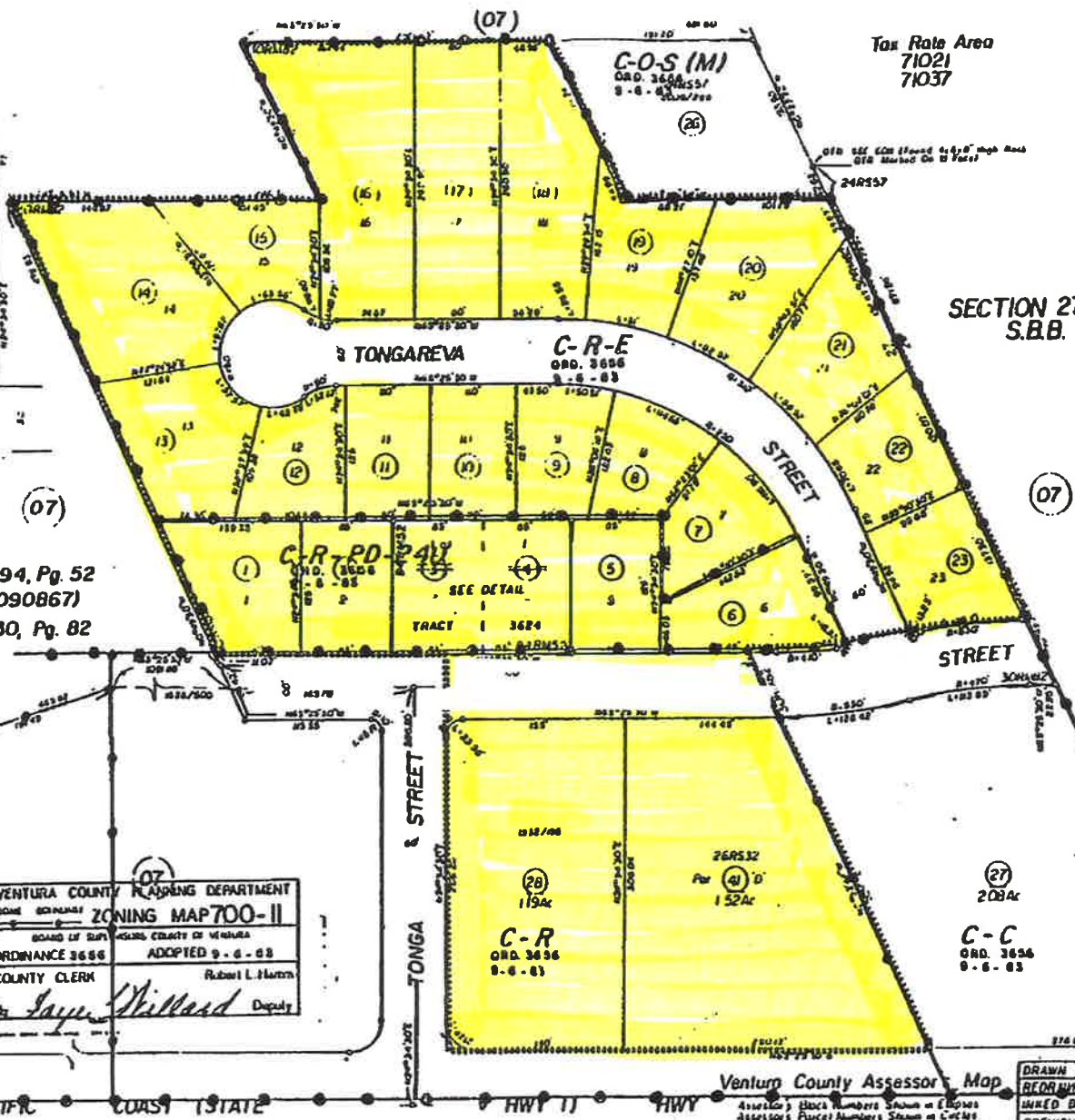
C/L ELLICE STREET

DETAIL SCALE 1"=50'

Tract 3624, R.M. Bk 94, Pg. 52
 (Condo Plan 820090867)
 Tract 1223, R.M. Bk 30, Pg. 82

NOTE
 For further information pertaining to
 Tract 3624 (Condo), see C.C.B.R.'s
 per 820090868

VENTURA COUNTY PLANNING DEPARTMENT
 ZONING MAP 700-II
 BOARD OF SUPERVISORS COUNTY OF VENTURA
 ORDINANCE 3686 ADOPTED 9-6-83
 COUNTY CLERK Robert L. Martin
 Sayer Willard Deputy



Tax Rate Area
 71021
 71037

SECTION 27, T.1S., R.20W.
 S.B.B. & M.

NOTE: ALL LOTS AND PARCELS SHOWN ON THIS PLAN
 OR NOT NECESSARILY CONSTITUTE LEGAL LOTS
 CHECK WITH COUNTY SURVEYORS OFFICE OR
 PLANNING DIVISION TO BE SURE.

DRAWN	CHECKED
REDAWN BY	DATE 10-11-11
INKED BY	EFFECTIVE 11-1-11
PREVIOUS Bd. 700, PGS 07 & 11	
Compiled By Ventura County Assessors Office	

Just south of Yerba Buena Rd.
 Solvroman